

Trails End Art Association

New Board Starts in January

December 2010

SPECIAL DATES

- December 29-30, pick up December Art
- No gallery show in January
- January 6-14, Annual Gallery Clean up & Maintenance
- January 21, Board & Committee Chair Planning Meeting
- February 5 'Cupcakes and Candy' Special Event, 2-5pm



Left to right: Kitty Paino, secretary; Mary Ann Gantenbein, 2nd VP; Beverly Peck, Treasurer; Lou Kister, 1st VP; Jeannette Davis (peeking over Lou), President; Susan Bish and Jane Means, Members-at-large. Photo by Kathy Gordon

Send Membership Check Today & Save \$5!

The change in membership dues was approved by a majority of members. The new dues have been increased by \$10. But if you send in your check by December 31st, you will save \$5. Please fill out both sides of the attached form to send in with your check. The form includes the annual liability form. Be sure to check your volunteer options. Your help is always appreciated!

Judith Fredrikson Featured

Judith Fredrikson's approach of using hand made acrylic paper incorporated into fine art was featured for the December Gallery Show.



The technique was taught by new member Linda Rothschild-Ollis last summer.

Judy is a native Oregonian. Before moving to Warrenton in 1994, she lived for about twenty years in the Seattle area.

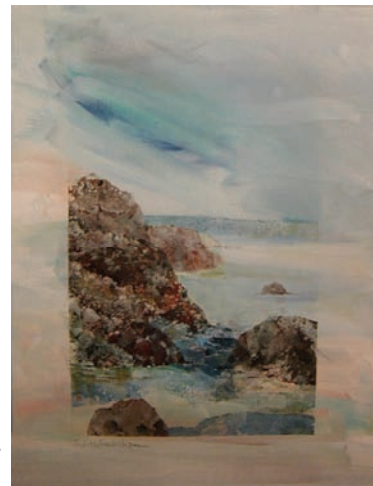
While in Seattle she belonged to the Write On-Calligraphers in Edmonds, WA. In 1985 she took a watercolor class with Seattle painter and calligrapher Marilyn Webberly. She became enchanted with watercolors and has remained so since.

Judith holds a Bachelor of Arts in English from Portland State University. She has completed a North

Light Course for Watercolor, and classes with Lois Erickson through Clatsop Community College.

Her work has shown at Harringtons at the Landing Gallery in Cannon Beach, Pacific Frame in Astoria,

Trail's End Art Association in Gearhart and the Palette Puddlers shows in Cannon Beach. She often



teaches classes in watercolor and other techniques.

Judy quietly volunteers numerous hours to TEAA.

Member Corner



December 10th Potluck

Thank You Eagle Financial Group

Thank you Eagle Financial Group for sponsoring the December 4th Holiday Gallery Opening event. Thank you also to Susan Thomas, Jo Pomeroy-Crockett and other volunteers who helped make the party festive and the food fantastic! Clair McIntyre won the \$30 gift certificate drawing.

No Gallery Themes are planned for the coming year.

Annual Cleaning

Under the able guidance of Sally Bailey, the annual TEAA Center clean up will be on January 6 and 7. **Members are asked to volunteer** to help by calling Sally at 325-1589, or email hookedon-art@yahoo.com. The floors will be scrubbed and resealed, so the building will be closed between January 6th to 15th. No General Meeting.



Mary Ann and Sally

TEAA Receives Local Cultural Grant

Mary Ann Gantenbein and Patty Davis accepted a check from the Clatsop County Cultural Coalition for \$500 at a reception on December 8th at the Coaster Theatre in Cannon Beach. The money will be used towards supplies or other methods to reduce cost to participants of the Children's Summer Art Camp. The Coalition is funded by the Oregon Trust. If you have sold art at TEAA and a commission was kept, or if you have donated to other qualified arts, heritage, and humanities organizations, you can then donate an equal amount to the Oregon Trust and receive 100% of what you donated to the Trust back

through a tax credit if you itemize your deductions. You may donate online at www.culturaltrust.org, by phone, or mail. Donations must be made by December 31st.



Mary Ann Gantenbein and Patty Davis to the far right with other Cultural Coalition Grant winners. More about the event can be found at www.clatsopculturalcoalition.org

A Present from Dots

Scott Leahy brought members who were at the General Meeting a 25% off gift card to Dots 'N Doodles to use between the meeting and New Years. He also announced that members are welcome to come in between now and New Years for an additional discount on the discontinued paints and inks. Members also viewed a new product catalogue for a special painting line they are introducing to the area. The grand opening for the store should be sometime in



Scott

Board Planning Meeting in January

There will be a planning meeting for Board and Committee Chairs on Friday, Jan. 21st from 10:30 -2:30 at Jeannette's house. 3928 Franklin Ave., Astoria. 503-338-6174.

General Meeting Minutes, December 10, 2010

Trail's End Art Association
General Meeting Minutes
12/10/2010

President Mary Ann Gantenbein called the meeting to order at 11am.

Present: Pat Button, Susan Bish, Louise Birkenfeld, Jane Means, Lynda Campbell, Janet Packard, Kitty Paino, Jeannette Davis, Sally Bailey, Susan Thomas, Becky Read, Lou Kister, Beverly Peck, Howard Peck, Deanne Johnson, Jo Pomeroy-Crockett, J.D. Spencer, Mary Ann Gantenbein, Gheri Fouts, Judy Fredrikson, Susan Romersa, Kathy Gordon and Millie Mobius

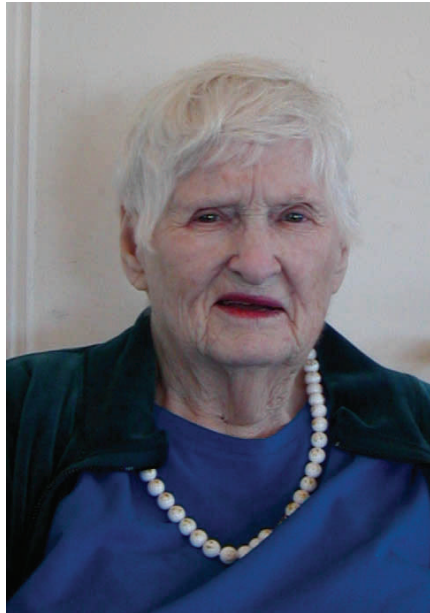
Treasurer's Report:

Beverly Peck provided a treasurer's report (on file with these minutes). She included a monthly breakdown of artist commissions. Beverly also gave her annual report about the Oregon Cultural Trust. A tax credit ensures that 100% of your donation to the Cultural Trust is returned to you, but you must first donate an equal amount to qualified heritage, humanities, or arts organizations like TEAA.

President's Report:

Mary Ann Gantenbein announced that TEAA received a \$500 grant for the Children's Summer Art Camp from the Clatsop County Cultural Coalition, with money provided by the Oregon Cultural Trust. Mary Ann

also informed members that the hours for sitting the Gallery have changed. Showing artists are



Pat Button installed officers in her unique way, ending with the swearing, 'So help us Picasso'

asked to sign up between 11am -3 pm, Friday through Sunday.

The classes on Tuesday, Wednesday and Thursday will provide coverage for the times they are meeting. Winter hours will be 11am -3 pm, Tuesday through Sunday.

There will no longer be show themes. Clair McIntyre

received the \$30 Gift Certificate at the December Holiday Gallery Opening. **Membership:** The changes in membership dues were approved by a majority of the membership. Members are reminded to



Mary Ann received a gift from TEAA, presented by President-elect Jeanette Davis for her service as President.

Time to sit the Gallery have changed for winter hours. Select times 11am-3pm, Friday-Sunday

pay their dues before December 31st to ensure a \$5 reduction in dues.

Members-at-large: Susan Bish, Member-at-large, reported that she received one complaint regarding the art in the Gallery drifting away from a fine arts theme. Discussion included providing a gift shop in the Center foyer

for knit items and jewelry that would not need to be changed monthly.

Gallery: Emphasis will be put on quality matting and framing. A guide will be



Lynda Campbell in her festive holiday hat

available at check-in for January. Members are asked to volunteer for two annual Center cleaning days, January 6 and 7, beginning at 9am. If you are able to help, call or email Sally Bailey 325-1589, hookedon-art@yahoo.com

Judith Fredrikson was selected as the December featured artist.

Presentation: Scott Leahy discussed some of the new

paint items in the new Dots 'N Doodles location. Each member at the General Meeting received a 25% discount card and many received samples.

Induction of Officers: Pat Button installed the new officers. Jeanette Davis President; Beverly Peck, Treasurer; Lou Kister 1st VP; Mary Ann Gantenbein, 2nd VP; Kitty Paino, Secretary; Susan Bish and Jane Means, Members-at-large

A Holiday Potluck and Gift Exchange followed the General Meeting

Meeting Adjourned 11:45am, next meeting January 14, 2011. Respectfully Submitted, Kitty Paino for Lou Kister.

Trail's End Art Association

656 Ave A St.

Gearhart, Oregon

PO Box 2351

Gearhart, Oregon 97138

Phone 503-717-9458

Email: trailsend2010@hotmail.com

www.TrailsEndArt.org

Plein Air

Open to all members. Painting in various regional locations. Contact **Sally Bailey** 503-325-1589 to check on schedule changes.

Pastel Studio, Join in at any time. Call Pastel facilitator **Kathy Moberg** 738-6653 for more information.

Watercolor Techniques, Carol Couch, Instructor. A new idea, skill, project, etc. each week. Just 'Drop In'. \$15 a session for members, \$18 for non-members. Contact 360-665-5319 for more information.

Watercolor Studio. Join at any time. Call facilitator **Susan King**, 503-861-0260 for more information.

Advanced Painting, Shirley Dahlsten, Instructor. Nov. 4 - February 10. All mediums accepted. Call 338-9367 325-1514 to register and for fees.

Collage & Other Fun Stuff. Call facilitator **Mary Ann Gantenbein** 503-861-2832 for more information

Linoblock Printing, Sheila Brown, Instructor Four week sessions \$60 for members- \$75 for nonmembers. Some materials provided. Must call ahead to pre-register. 503-338-6351.

Drawing, Sheila Brown, Instructor. Members pay \$48 for 4 sessions or \$15 for a single session. Non Members \$60 for 4 sessions or \$18 per session. All materials supplied. Pre-register by calling 503-338-6351.

NEW WINTER GALLERY HOURS ARE 11AM-3PM

Trail's End Art Association Calendar

January 2011

Sunday	Monday	Tuesday	Wednesday	Thursday	Friday	Saturday
December 26 <i>Open Studio</i> <i>Art can be picked up any day this week on your schedule, but the office will be opened on Wed-Thur</i>	27 <i>Open Studio</i>	28 Pastel Studio K. Moberg 10 am-3pm	29 <i>Open Studio</i> Pick up December Art. Gallery closed in January	30 <i>Open Studio</i> Pick up December Art. Gallery closed in January	31 <i>Open Studio</i> <i>Gallery Closed</i>	January 1 <i>New Years</i> <i>Gallery Closed</i>
2 <i>Open Studio</i> <i>Gallery Closed</i>	3 <i>Open Studio</i> <i>Gallery Closed</i>	4 Pastel Studio K. Moberg 10 am-3pm	5 Watercolor Techniques C. Couch 9:30-12:30 <i>Interm. Watercolor Group Class 1-4pm</i>	6 Annual Building Cleaning	7 Annual Building Cleaning	8 Gallery and Center Closed for Cleaning
Gallery and Center Closed for Maintenance						
9	10	11	12	13	14 No General Meeting In January	15 Lino Block-Printing Sheila Brown 9:00-12:00 Drawing S. Brown 1:00-4:00pm
16 Bring February Art	17 Bring February Art	18 Pastel Studio K. Moberg 10 am-3pm	19 Watercolor Techniques C. Couch 9:30-12:30 <i>Interm. Watercolor Group Class 1-4pm</i>	20 Plein Air Advances Painting S. Dahlsten 10am-3pm	21 Board and Committee Chair Planning Session 10:30am-3pm Collage & Other Fun Stuff 9am-1pm	22 Lino Block-Printing Sheila Brown 9:00-12:00 Drawing S. Brown 1:00-4:00pm
23 <i>Open Studio</i>	24 <i>Open Studio</i>	25 Pastel Studio K. Moberg 10 am-3pm	26 Watercolor Techniques C. Couch 9:30-12:30 <i>Interm. Watercolor Group Class 1-4pm</i>	27 Plein Air Advances Painting S. Dahlsten 10am-3pm	28 Collage & Other Fun Stuff 9am-1pm	29 Lino Block-Printing Sheila Brown 9:00-12:00 Drawing S. Brown 1:00-4:00pm
30 <i>Open Studio</i>	31 <i>Open Studio</i>	February 1 Pastel Studio K. Moberg 10 am-3pm	2 Watercolor Techniques C. Couch 9:30-12:30 <i>Interm. Watercolor Group Class 1-4pm</i>	3 Plein Air Advances Painting S. Dahlsten 10am-3pm	4 Collage & Other Fun Stuff 9am-1pm	5 Cupcakes and Candy Special Event 2-5pm