



Trails End Art Association

April 2011

SPECIAL DATES

- May 7
Special Event, 2-5pm
Mother's Day Celebration
High Tea
- May 15-16, Bring
April Art
- May 13, Board
Meeting 9:30am
- May 13, General
Meeting 11 am
- June 1, Summer
Hours Begin 11-5pm
- June 4, Open
House 3-6pm

2011 TEAA BUSINESS SPONSORS

Eagle Financial Group

Windermere Cronin and Caplan Realty Group

Thank you Seven D's Nursery for the garden donations

Featured Artist

To Trail's End Art Association:

I am honored to be chosen as Artist of the Month. Thank you.

Painting has been a part of my life since I found an old photo tinter set in an old barn when I was 12 years old. I painted on pieces of cardboard not really knowing anything about the process.

High school art was the real beginning. Quite a few years later I took classes at Portland State, taking oil painting, etching and structural projects.

I began watercolor at our local community college in Raymond under Leda Craig four years ago.

In the future I hope to do more oils since my son keeps giving me canvasses. I think that's a strong hint. Thank you again for this honor.

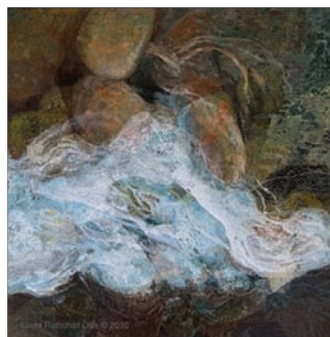
~Pat Barden



Trail's End Summer Art for Adults & Children

This is our 4th Annual "Art in Gearhart" where we bring you local, national and International Artists at reasonable

colored pencils, we have a workshop for you. In most cases, all materials are supplied and you will find a warm friendly atmosphere in which to work.



Linda Rothchild-Ollis Collage

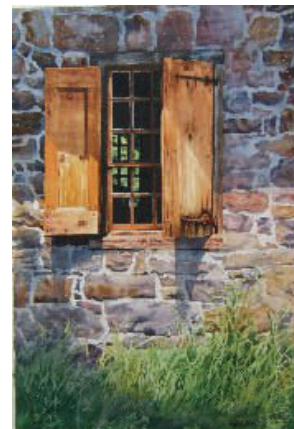


Kristy Kutch-Colored Pencil

prices. We are a non-profit organization and this program is part of our fund raising campaign so that participants can find a fun way to help TEAA meet their fundraising goals. Whether you are a watercolor artist, love acrylics, always wanted to learn to make jewelry or come and play with

Please join us this summer to learn a new or reinforce a budding artistic skill. You will find more information about all the visiting and local artists by clicking on www.trailsendart.org or call Ellen Zimet at 503-861-0718 or ellenzimet@earthlink.net

See a sneak preview on page 2. A full brochure and registration information will be available in the next Newsletter.



Karen Werner Oils & Acrylics

President's Easel

Hello Fellow Artist,
I want to give you a little update regarding the Planning Meeting we had September 15, 2010. As you may remember, the summary sheet from that meeting showed three areas that the membership felt strongly about.

Opportunities: Of the ten items listed, we have worked on the following

1. Partner with local business (or sponsors)
2. Rent to outside non-artists (there is a party renting the building for an outside meeting this summer)
3. Rent to outside events & artists (in August the studio is rented to an outside group of painters coming from all over the USA)
4. Expanded Marketing Ideas (there is a new Marketing Committee looking into this area)

Solving Challenges: seven areas listed – five have had some work done.

1. Start Art Receptions earlier – now 2-5pm. Starting in

- June they will be from 3-6pm
2. Lowering costs-new thermostat, etc.. New thermostat installed
 3. Fewer Receptions – this has worked beautifully
 4. Special events receptions – these have been lovely
 5. Tiered memberships – we did at the beginning of the year. Discount for paying early.

We haven't done all that was suggested but we are off to a good start. I hope some of the changes have been noticeable and we are working to your expectations. This is a slow process but the board is trying.

If you have other suggestions please drop them off in the little RED SUGGESTION BOX in the studio by the TV area.

All suggestions are discussed by the board – again some are implemented ~ some are not.

Happy Painting – see you in the gallery. ~Jeannette

Learn To Draw

A Drawing Class for Beginners

Beginning Drawing Class
Friday mornings: April 22, 29 and May 6, 20 -9:30 am to 12:30 pm

Cost: \$15 per session for members; \$18 per session for non-members
This beginning drawing class will start with a four-session segment. Students will study value and shadow to create illusion of three-dimension, try different drawing tools, learn ways to create texture, and explore interplay of basic shapes and details. Classes will include time to try quick sketching and contour drawing styles. Call Judy Fredrikson (503-791-0759) to sign up. If you want a kit of basic materials for a one-time cost of \$15, let Judy know when you sign up.



T is for Trillium Judith Fredrikson

A Peek At This Summer's 'Art in Gearhart'

July 4th-Gala 9am-3pm (Carol Couch)

Children's Camp

July 5-7 Children's Drawing & Fine Art

Rhonda Grudnick

July 8 African Art for Children

Brooke Roberts

July 11-14 Children's Drawing & Fine Art

Rhonda Grudnick

July 15 African Art for Children

Brooke Roberts

61st August Show (Jo Pomeroy-Crocket)

July 24-25

July 26-27

July 28

August 6

September 11-12

Bring Art

Hang Show

Judging

Show Opening

Pick up Art

July/August Offerings

July 30, 31 Colored Pencil

Kristy Kutch

August 1 Trail's End Appreciation Open House 10am-2pm

August 2 Personal Travel Diary

Scott Leahing 9:30-3:30

August 3-4 Still Life in Oils or Acrylics Karen Werner 9:30-4:00

August 5 Beginning Collage

Techniques Mary Ann

Gantenbein 9:30-3:30

August 15-17 Transparent Watercolor Fealing Lin 9:30-4:00

August 19 Jewelry Debbie

Janssen 9:30-3:30

August 22-25 Acrylic, Hand Painted Papers and Collage Linda Rothchild Ollis 9:30-3:30

August 25 Calligraphy Workshop

Rebecca Read 9:30-3:30

...and more, more, more!!



Fealing Lin Transparent Watercolors

Minutes April General Meeting

Call to Order

Jeannette Davis called the meeting to order at 11:10am

Members Present: Jeannette Davis, Beverly Peck, Lou Kister, Kitty Paino, Ellen Zimet, Susan Bish, Jane Means, Millie Mobius, Judy Fredrikson, Becky Reed, Jan Clawson, Lynda Campbell, Sheila Parsons, Susan Thomas

Secretary's Report: There were no changes to the General Meeting Minutes for March that were included in the March Newsletter. (There were no Board Minutes for March due to cancellation because of last month's tsunami warning). *Jane Means moved to accept the minutes, and Becky Reed seconded. Motion approved.*

Treasurer's Report: Beverly Peck reported that she has filed the taxes. There were four pieces of art sold in March. *Lou Kister moved to accept the Treasurer's Report, Judith Fredrikson seconded. Motion approved.*

New Business

Committee Report

Supplies: Jan Clausen, the new Supply Coordinator, reported that she got paper towels, larger plates, hot drink cups, craw string bags, large napkins and smaller plates. Members are asked to write what is needed in the notebook in the office. There are extra supplies in the outside shed. Members are asked to check the first garden shed (north) first.

Events: Susan is working on a Mother's Day Tea for the May 1st Special Event.

Kathy Moberg will be the demonstrator.

Membership: There are approximately 80 members as of April 1st. This is slightly ahead of the numbers at this time last year.

Old Business

March Open House: Becky Reed did a beautiful calligraphy demonstration. Susan Bish reported that it went well, and that Becky did a wonderful job interacting with visitors. Seven D's Nursery donated three plants for the Garden for the Open House. Becky Reed recommended that the time should be changed to 3-6pm for the entire year. Becky Reed volunteered to ensure the evening hours in the winter hours when it gets dark earlier. The issue of time for the future times for the Open House will be included in next month's agenda. *Susan Bish moved to establish hour 2-5pm during the winter months of November through May and 3-6pm from June through October.*

Ellen seconded. Motion approved.

Touch of Art in Gearhart: Ellen Zimet will provide a thorough review in the April Newsletter. Highlights include: Karen Werner will teach oil/acrylic, selling on E-Bay and blogging. Kristy Kutch colored pencil, Fealing Lin watercolor, Linda Rothchild-Ollis Aqueous Media, Rebecca Reed, Debbie Janssen, Sheila Parsons and more. Jeannette Davis discussed the Kids Camp in July. The classes and instructors haven't yet been formalized.

Signage: Becky Reed has provided signage for the entry way delineating the Gallery and Studio. She is working on one for the restroom.

Procrastinator's Dinner: There are 26 signed up.

Judged Art Show: Jo Pomeroy Crockett is working on getting judges.

Chimney: Members commented that the entry space looks much larger without the chimney and the consensus is that the area is lighter and much more inviting.

Membership Contributions: Lynda Campbell reported that she had \$60 from members for the Dots 'N Doodle's Open House. She got a gift certificate at Columbia Coffee Roasters. They wanted TEAA members the first opportunity to RSVP to attend their special guest during their Open House opening. April 17, 1-4pm.

New Business

Management: Gheri Fouts asked members to fully complete the sign in sheets for the gallery, including their sitting dates. There is also a sign out sheet for work picked up.

Long Beach Peninsula Art Association: Jan Clausen reported that the Long Beach Peninsula Art Association is interested in sharing information with TEAA. She also wanted to let members know that the Greaver exhibit at the Seaside Library. It will be taken down on April 17th. In July, Jo Pomeroy Crockett will have a show at the library. Judith Fredrikson suggested a Newsletter exchange with the organization.

Good of the Order

Gheri Fouts discussed something she saw at a Gallery in Tucson. They had a silent auction. Each painting had a box and each person bid on the painting. The paintings were for invitation only and for a week of viewing. The boxes were opened at the end of the week and the high bid won the painting.

Some of the money went to a charity, some to the artist, and some to the artist. On the brochure, they had each painting listed, the value of the painting, and the minimum bid. Ellen recommended forming an ad hoc Marketing Committee. Becky Reed, Sheila Parsons, Susan Thomas, Gheri Fouts and Ellen Zimet, and Kitty Paino also volunteered to participate.

Judy Fredrikson is interested in starting a drawing class for

beginners since Sheila Brown won't be teaching it at TEAA this coming term. The time is open. She would like to have a group of people and then determine the time. Jan Clausen wanted to know if TEAA would like to give an art scholarship. It will be given to the Marketing Committee to explore.

Tom McPherson's mother passed recently and asked if there was a place to memorialize her art. TEAA has accepted donations of art. The Board recommended donating the large Lewis and Clark painting to Fort Clatsop or the Heritage Museum and removing all art from the studio. To sell the art, family members can sell it at the 4th of July sale or rent the studio to sell the arts and supplies. Ideas were requested of the group. One idea is having a DVD video frame to memorialize past artists. Becky Reed volunteered to bring suggestions about how to handle memorializing art.

Becky Reed also suggested giving a certificate of completion for the classes they take in August. It will be taken up with publicity and marketing.

Jeannette reminded members to complete their membership biography if they haven't completed one or didn't have one in the past.

Respectfully submitted: Kitty Paino,
Secretary

Be sure to put a price on your cards that are for sale.

Volunteers are needed for the garden. If you would like to help, call Janet Bland at 503-717-1690 or email janetbland@aol.com

Trail's End Art Association

656 Ave A St.

Gearhart, Oregon

PO Box 2351

Gearhart, Oregon 97138

Phone 503-717-9458

Email:

trailart2010@hotmail.com

www.TrailsEndArt.org

Plein Air

Open to all members. Painting in various regional locations. Contact Sue Bish 503-861-1428 to check on schedule changes.

Pastel Studio, Join in at any time. Call Pastel facilitator **Kathy Moberg** 738-6653 for more information.

Watercolor Techniques, Carol Couch, Instructor. A new idea, skill, project, etc. each week. Just 'Drop In'. \$15 a session for members, \$18 for non-members. Contact 360-665-5319 for more information.

Watercolor Studio. Join at any time. Call facilitator **Susan King**, 503-861-0260 for more information.

Collage & Other Fun Stuff. Call facilitator **Mary Ann Gantenbein** 503-861-2832 for more information

Drawing, Judith Fredrikson, Instructor. Members pay \$15 per sessions Non Members \$18 per session. To register and for a list of supplies, call 503-791-0759)

WINTER GALLERY HOURS ARE 11AM-3PM

*Do you have a Newsletter item?
Contact Kitty 503-325-0342, or
paino2060@charter.net*

Trail's End Art Association Calendar

May 2011

Sunday	Monday	Tuesday	Wednesday	Thursday	Friday	Saturday
1 <i>Open Studio</i>	2 <i>Open Studio</i>	3 Pastel Studio K. Moberg 10 am-3pm	4 Watercolor Techniques C. Couch 9:30-12:30 Interm. Watercolor Group Class 1-4pm	5 <i>Open Studio</i> Advanced Art Show Time & Lunch Plein Air Begins (see website for schedule)	6 Drawing Class J. Fredrikson 9:30-12:30 Collage and Other Fun Stuff 1-4pm	7 SPECIAL EVENT Mother's Day Celebration Tea 2-5
8 <i>Open Studio</i>	9 <i>Open Studio</i>	10 Pastel Studio K. Moberg 10 am-3pm	11 Watercolor Techniques C. Couch 9:30-12:30 Interm. Watercolor Group Class 1-4pm	12 <i>Open Studio</i> Plein Air	13 Business Meeting 9:30am General Meeting 11:00am	14
15 BRING ART PICK UP ART	16 BRING ART PICK UP ART	17 Pastel Studio K. Moberg 10 am-3pm	18 Watercolor Techniques C. Couch 9:30-12:30 Interm. Watercolor Group Class 1-4pm	19 <i>Open Studio</i> Plein Air	20 Drawing Class J. Fredrikson 9:30-12:30 Collage and Other Fun Stuff 1-4pm	21
22 <i>Open Studio</i>	23 <i>Open Studio</i>	24 Pastel Studio K. Moberg 10 am-3pm	25 Watercolor Techniques C. Couch 9:30-12:30 Interm. Watercolor Group Class 1-4pm	26 <i>Open Studio</i> Plein Air	27 Collage & Other Fun Stuff 9am-3	28
29 <i>Open Studio</i>	30 <i>Open Studio</i>	31 Pastel Studio K. Moberg 10 am-3pm	June 1 Summer Hours Begin 11 am - 5 pm	2 <i>Open Studio</i> Plein Air	3 Collage & Other Fun Stuff 9am-3pm	4 OPEN HOUSE 3-6pm (note new time)