



Trails End Art Association

Year in Review Highlights Edition

A Message from President Jeanette Davis

January 2011

SPECIAL DATES

- January 16-17, Bring February Art
- January 21, Board & Committee Chair Planning Meeting. Call Jeanette for Directions 503-338-6174
- February 5 'Cupcakes and Candy' Special Event, 2-5pm
- February 11, Business Meeting 9:30am and Regular Meeting 11:00am



Brooke Roberts demonstrated at the April Reception with a special sale to help fund her medical mission to Mali. Brooke is an obstetrics nurse.

Update your Biography for the new Gallery Book this months! Submit at TEAA Office

Hello fellow artist,

Firstly I want to say how honored I am that you have entrusted me to lead TEAA this coming year. Starting the New Year can be somewhat overwhelming but with the fantastic board and committee chairs I am sure we are going to have a very rewarding year.

We will start the New Year with a beautifully cleaned and painted gallery and as well as a cleaned office and class room. A huge **THANK YOU TO ALL THAT HELPED CLEAN, SCRUB & PAINT. THANK YOU – THANK YOU !!!**

On January 21 the board will meet along with some of

class you would like to see started, what ever. All suggestions will be brought before the board at our monthly meeting for discussion. We may or may not implement the suggestion, but we will discuss it.

I would like to once again remind each of you that enter art work to please sign up to 'sit the gallery' at the time you bring in your art. It is so important that we each do our part in order to keep the gal-

lery staffed and open. You don't even have to enter art work to sit the gallery. If you don't have any art in the show, you can work on an art project while you're sitting the gallery.

I so look forward to our year ahead. This year's "A Taste of Art in Gearhart" is already taking shape. Some classes have already been scheduled and new classes are being talked about. 2011 is Astoria bi-centennial. We hope to have TEAA member's art displayed in Astoria and/or here in the gallery depicting some part of that theme.

Please consider asking a family member, neighbor or friends to attend one of

our Saturday Artist Open Houses as a wonderful way



Mary Ann Gantenbein Cleaning



Janet Packard Demonstrating a Lost Art

the committee chairs to set the year's calendar. There are already many great fun events planned for the coming year.

One item I want to bring back is a 'SUGGESTION BOX'. I am sure many of you have or will have great ideas throughout the year on ways to improve our mission, a new type or style of

to introduce new people to Trail's End. You might even consider asking them to attend one of our monthly meetings. They are always so informative and FUN. . . There are TEAA post-cards in the office for members to use as invitations to first Saturday'snArt Walk and our Open House.

Next month's meeting in February we are going to have an "artist grab bag – give away". Want to know what is being given away? You have to attend the meeting to find out. **LOTS OF GOOD STUFF. . . .**

To quote Ralph Waldo Emerson "Do not go where the path may lead, go instead where there is no path and Leave a Trail " Let us create the path to new and beautiful art this year that leads all to the Trail's End gallery. Jeannette Davis, President

2010 Featured Artists and a Few Highlights

January/February

Susan Romersa

Susan moved to Seaside Oregon from Las Vegas four years ago. After a long career in Advertising and Publicity, Susan has been focusing on writing, photography and painting along the Oregon coast..



May

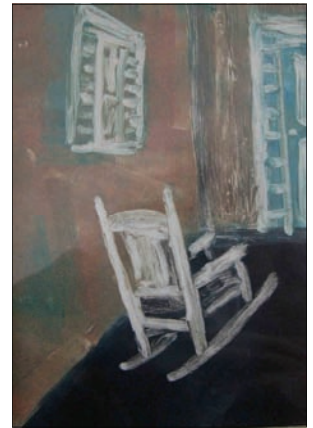
Sheila Brown

Sheila Brown lives and works in Astoria, Oregon. She has a broad array of artistic talents including pottery, graphic design, professional illustration, indoor and outdoor murals, watercolor, collages, colored pencil, and linoleum block printing.



Vicki Baker

Before retirement, Vicki was an elementary school teacher for 30 years in both the Midwest and Oregon. Although no formal background in art when she was younger, she began taking classes the last ten years of her teaching to help her students.



March

Steven Bash

Steven has lived in Oregon for over 20 years and is a licensed contractor. He studied art with James Turrell and Ed Beadsely.



June

Ellen Zimet

After graduation in 1953, Ellen was accepted at Pratt Institute in Brooklyn, NY in the School of Fashion Design. She graduated with a BFA in 1957. She did several internships, including companies like Forstmann Wool and Betsy McCall dolls., and worked for Bobbie Brooks in Cleveland.



April

Jeanette Davis

Jeanette and her husband retired to the north coast from California. Her interest in art began when she was a small child. Her first classes were Jean Barney's



oil painting class at Clatsop community College and Carol Couch's Beginning Watercolor class at Trail's End.

August

**Best of Show
Debbie Jansen**

Debbie has lived in Mexico and Sitka, Alaska. While in Alaska she began beading after taking a class.



Best of Show
Debbie Janssen

September

Gin Laugherty

Gin Laugherty She has always loved color and texture. At first it sowed itself in landscaping and other alterna-



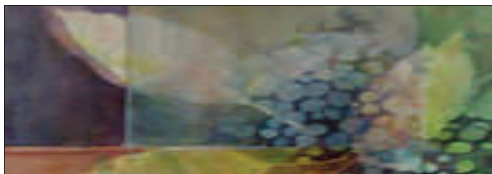
tive arts, but after she retired as a speech pathologist, she fell in love with print-making and monotypes when

she took a class at Clatsop Community College

October/November

Jo Pomeroy-Crockett

Jo creates in watercolor, pastel, mixed media, and collage. In addition to her work as a freelance writer and educator, her painting offers opportunities to experiment with various techniques, approaches, and materials.



December



Judy Fredrikson

Judy is a native Oregonian. Before moving to Warrenton in 1994, she lived for about twenty years in the Seattle area. Judith holds a Bachelor of Arts in English from Portland State University. She has completed a North Light Course for Watercolor, and classes with Lois Erickson through Clatsop Community College.



Susan Thomas The New Art Event Angel brought in our first corporate sponsor for a reception, Eagle Financial Group



Float House ~Paul Titus
August People's Choice Award



Mark Murphy and **Lloyd Cook** provided a fascinating look at miniature furniture and paintings at the July Meeting.



Mark Kenny month's Artist Presentation at the February General Meeting with lively humor. He said it all began in 1961 when he seemed to be doing art projects while still in the womb.



Stone sculptor **Dale Rogers** gave an artist demonstration at the March Meeting.



In April **Scott Leahy** from **Dots 'N Doodles** presented a thought provoking session on creating an art journal for travel. Check out the new store at 303 Marine Drive, Astoria, Oregon

Trail's End Art Association

656 Ave A St.

Gearhart, Oregon

PO Box 2351

Gearhart, Oregon 97138

Phone 503-717-9458

Email:

trailart2010@hotmail.comwww.TrailsEndArt.org**Plein Air**

Open to all members. Painting in various regional locations. Contact **Sally Bailey** 503-325-1589 to check on schedule changes.

Pastel Studio, Join in at any time. Call Pastel facilitator **Kathy Moberg** 738-6653 for more information.

Watercolor Techniques, Carol Couch, Instructor. A new idea, skill, project, etc. each week. Just 'Drop In'. \$15 a session for members, \$18 for non-members. Contact 360-665-5319 for more information.

Watercolor Studio. Join at any time. Call facilitator **Susan King**, 503-861-0260 for more information.

Advanced Painting, Shirley Dahlsten, Instructor. Nov. 4 - February 10. All mediums accepted. Call 338-9367 325-1514 to register and for fees.

Collage & Other Fun Stuff. Call facilitator **Mary Ann Gantenbein** 503-861-2832 for more information

Linoblock Printing, Sheila Brown, Instructor Four week sessions \$60 for members- \$75 for nonmembers. Some materials provided. Must call ahead to pre-register. 503-338-6351.

Drawing, Sheila Brown, Instructor. Members pay \$15 per sessions Non Members \$18 per session. To register and for a list of supplies, call 503-338-6351.

NEW WINTER GALLERY HOURS ARE 11AM-3PM

Trail's End Art Association Calendar

January –February 2011

Sunday	Monday	Tuesday	Wednesday	Thursday	Friday	Saturday
16 <i>Bring February Art</i>	17 <i>Bring February Art</i>	18 Pastel Studio K. Moberg 10 am-3pm	19 Watercolor Techniques C. Couch 9:30-12:30 Interm. Watercolor Group Class 1-4pm	20 Plein Air Advances Painting S. Dablsten 10am-3pm	21 Board and Committee Chair Planning Session 10:30am-3pm Collage & Other Fun Stuff 9am-1pm	22 Lino Block-Printing Sheila Brown 9-:00-12:00 Drawing S. Brown 1:00-4:00pm
23 <i>Open Studio</i>	24 <i>Open Studio</i>	25 Pastel Studio K. Moberg 10 am-3pm	26 Watercolor Techniques C. Couch 9:30-12:30 Interm. Watercolor Group Class 1-4pm	27 Plein Air Advances Painting S. Dablsten 10am-3pm	28 Collage & Other Fun Stuff 9am-1pm	29 Lino Block-Printing Sheila Brown 9-:00-12:00 Drawing S. Brown 1:00-4:00pm
30 <i>Open Studio</i>	31 <i>Open Studio</i>	February 1 Pastel Studio K. Moberg 10 am-3pm	2 Watercolor Techniques C. Couch 9:30-12:30 Interm. Watercolor Group Class 1-4pm	3 Plein Air Advances Painting S. Dablsten 10am-3pm	4 Collage & Other Fun Stuff 9am-1pm	5 Cupcakes and Candy Special Event 2-5pm
6 <i>Bring February Art</i>	7 <i>Bring February Art</i>	8 Pastel Studio K. Moberg 10 am-3pm	9 Watercolor Techniques C. Couch 9:30-12:30 Interm. Watercolor Group Class 1-4pm	10 Plein Air Advances Painting S. Dablsten 10am-3pm	11 Board and Committee Chair Planning Session 10:30am-3pm Collage & Other Fun Stuff 9am-1pm	12 Lino Block-Printing Sheila Brown 9-:00-12:00 Drawing S. Brown 1:00-4:00pm
13 <i>Open Studio</i>	14 <i>Open Studio</i>	15 Pastel Studio K. Moberg 10 am-3pm	16 Watercolor Techniques C. Couch 9:30-12:30 Interm. Watercolor Group Class 1-4pm	17 Plein Air Advances Painting S. Dablsten 10am-3pm	18 Collage & Other Fun Stuff 9am-1pm	19 Lino Block-Printing Sheila Brown 9-:00-12:00 Drawing S. Brown 1:00-4:00pm
20 <i>Open Studio</i>	21 <i>Open Studio</i>	22 Pastel Studio K. Moberg 10 am-3pm	23 Watercolor Techniques C. Couch 9:30-12:30 Interm. Watercolor Group Class 1-4pm	24 Plein Air Advances Painting S. Dablsten 10am-3pm	25 Collage & Other Fun Stuff 9am-1pm	26 Lino Block-Printing Sheila Brown 9-:00-12:00 Drawing S. Brown 1:00-4:00pm
27 <i>Open Studio</i>	28 <i>Open Studio</i>	26 Pastel Studio K. Moberg 10 am-3pm	The TEAA Website had 126,207 visits by 3,442 different visitors in 2010. This is 16% higher than in 2009			