

# Trails End Art Association

July-August 2011

## SPECIAL DATES

- July 30-31 Kristy Kutch Colored Pencil
- July 30-31 AVA Studio Shows—throughout Astoria
- August 6 Reception and Viewing Judged Show 4-7
- Summer Workshops continue from August 2-31

**GALLERY HOURS ARE 11AM-5PM AND CLOSED ON MONDAYS & TUESDAYS**

This month the Studio will also be closed August 8-12 to host The Scurvy Elephants

## 2011 TEAA BUSINESS SPONSORS

Eagle Financial Group

Windermere Cronin and Caplan Realty Group

## Summer Art Workshops

The Summer Art in Gearhart series is off to a running start. Classes are filling, with only Jewelry cancelling. There is still room in several of the classes.

The series was created by Ellen Zimet as a major fundraiser for the organization's operational budget.

This year a group of painters from all over the U.S. who call themselves The Scurvy Elephants, have gathered together to take a special week offering by Fealing Lin at Trail's End, which has brought in much needed income while showcasing our part of the Oregon coast.

Summer Art instructor Kristy Kutch will be doing a demonstration at our Community Partner Dots 'N Doodles on July 29, 11am-1pm. On August 8<sup>th</sup>, the Scurvy Elephants will be hosted at Dots 'N Doodles from 5-7:30pm for a reception.. On August 12<sup>th</sup>, the Scurvy Elephants will be showing their work and have their final critique around 4pm at Trail's End. Members are invited. Trail's End will assist with the refreshments at both events.

## Chuck Overton Featured

Photographer Chuck Overton is the July featured artist. There will be more about Chuck in the August Newsletter. His award winning photo can be seen to the right.

## Newsletter Distribution

The TEAA Board determined that printing the Newsletter provides advertising and publicity. It was determined that the Association should continue to provide the letter to any members who want a hard copy and to ensure that any members who would prefer a hard copy to be able to get one on request. If you are presently receiving the online version of the letter and would prefer a hard copy letter mailed to your home, contact either Mary Ann Gantenbein 503-861-2832 or Kitty Paino paino2060@charter.net.

## Summer Art Workshops That Are Still Available!

**Drawing & Painting with the Colored Pencil**  
Kristy Kutch July 30-31

**Creating Personal Travel Diary**  
Scott Leaching August 2

**Acrylics & Creating Collage Materials**  
Mary Ann Gantenbein August 5

**Beginning Encaustic**  
Barbara Mallon, August 20

**Putting Light in Your Watercolors**  
Sheila Parsons August 25

**Watercolor Still Life**  
Judith Fredrikson August 26

**Learning the Art of Assemblage**  
Jo Pomeroy-Crockett  
This workshop will be held in Sept.

**Register at TEAA or Online at [www.trailsendart.org](http://www.trailsendart.org)**



## Minutes July 22, 2011 General Meeting

**Members Present:** Pat Button, Chuck Overton, Jane Means, Susan Bish, Lou Kister, Becky Read, Normandie Hand, Judith Fredrickson, Ellen Zimet, Jo Pomeroy-Crockett, Mary Ann Gantenbein, Deanne Johnson, Lynda Campbell, Susan Thomas, Kitty Paino, Jeanette Davis, and Debbie Jansen.

President Jeanette Davis called the meeting to order at 11:10 am.

**Treasurer's Report:** Beverly Peck reported that this month's financial information includes the income from summer workshops (\$6,075 this month prior to expenses) and the addition of a card sales category was added to the art sales.

### Old Business

**August Judged Show:** Jo Pomeroy-Crockett reported on the calendar for the Judged Show. The show will be open for viewing on Friday August 5, with the Gala Opening on August 6, 4-7pm. Jo Pomeroy-Crockett reported

*Invite your friends  
and family to the August 6th Gala Reception for the August Judged Show*

that she needed assistance for in-take for the show. There will be an entry table for intake at the door to check to make sure that the intake form is completed and that the ID tag is placed on the art. The person in the gallery will take the art. Then the artist will go to a number of tables to register their work. At each table there will be a master sheet for each medium and a number that will be used by the judges. That master sheet will be used for the master catalogue. Art will be checked to assure that hanging art is suitable for hanging and that repairs will need to be made

by the artist. The hanging committee will hang on Tuesday. Ellen and Jo will ensure that the information is ready for the catalogue. A \$50 honorarium will be given to each judge. Each child will receive a bag of art goodies which Dots 'N Doodles will contribute. There will be a ten dollar gift certificate for first in each of the categories and a \$25 gift certificate for Best of Show. Judges do not need to give awards in categories if they don't feel the work is professional. Judges include: Jennifer Goodenberger, Paula Duncan, and Denise Reed. They have been invited to say a few words about their experience judging. They are judging on composition, design, originality, creativity, technical skill, emotional appeal, and appropriateness for this venue. The awards will be presented at 5pm on August 6. Neawanna-By-The-Sea is providing refreshments. An attempt will be made to get entertainment in the gallery during the reception. The People's Choice Award will be voted on all month, and the winner will receive a \$10 gift certificate.

### Marketing Committee Report:

Becky Read showed the new packet to take to sponsors in the community. It includes a letter and the benefits of being a sponsor such as advertising in the Newsletter, on the website, and on the brochure for the Judged Show. There is also a potential for the business to use the building for a meeting and an opportunity for them to show art in their business. There will be a rack card, membership brochure, Newsletter, summer class brochure and any other information useful to the sponsor. Jeanette Davis thanked the Marketing Committee for their work.

**Staples:** Chuck Overton reported that TEAA has a discount option at

Staple's in Warrenton. TEAA is eligible for a business Reward. If TEAA members give the TEAA phone number, the member is eligible for the discounts. The member receives a 20% discount, and for each sale, TEAA will receive an additional 10% discount on sup-



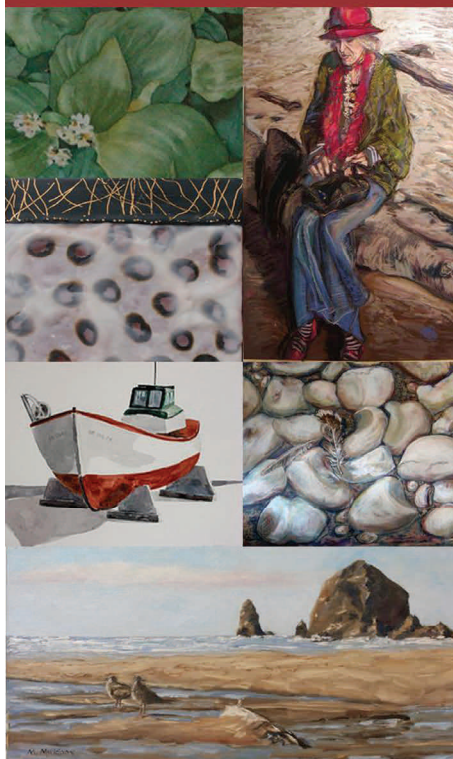
*Chuck Overton Researched Staples*

plies. He also told us that he takes his printer cartridges there for a \$2 refund. More information to follow when it is set up and ready for TEAA members.

**Summer Classes:** Kristy Kutch and Scott Leahing still need more members, but the workshops will take place. A member will be needed to open and be available. The jewelry class has been cancelled. Kristy Kutch will be doing a demonstration at Dots 'N Doodles on July 29, 11am-1pm. On August 8<sup>th</sup>, the Scurvy Elephants will be hosted at Dots 'N Doodles from 5-7:30pm. All are invited. On August 12<sup>th</sup>, the Scurvy Elephants will be showing their work and have their final critique around 4pm at Trail's End. Trail's End will assist with the refreshments at both. Members are encouraged to attend.

**Carol Couch's Watercolor Techniques begins again September 7th  
Judith Fredrikson's Drawing September 9th**

Trail's End  
Art Association  
**Gallery & Classes**  
656 A Street Gearhart, Oregon



*New Rack Card emphasizes Gallery Sales and Classes*

**New Member:** New member Normandie Hand attended the General Meeting. You can meet her at Linda Rothchild-Ollis' summer workshop.



*Normandie Hand*

**Seaside Chamber:** The Chamber sends out a weekly WAVE via email. Jeanette has included the events going on at Trail's End.

**Professional Development Scholarship:** Money is available for people who want to take classes but are unable to afford them at this time.

***TEAA wants everyone to take advantage of workshops & classes. Professional Development Scholarships are available for Summer Art in Gearhart.***

**Children's Camp:** The Clatsop County Cultural Coalition donated \$500 towards the camp. Scholarships were given to students and the camp produced enough to pay for next Summer's Children's Camp scholarships. There were six participants in Brooke's class and twelve students in Rhonda's classes.

**Newsletter:** We will go back to mailing the Newsletter out to those who prefer it to the online version. It was decided that it is good advertising. Members have the option for how they would like to receive the publication.

**New Business**

**September Upcoming Events:** Intake for September 11-12. Mary Ann will be the Demonstrator at the open house. The September General meeting will be a Potluck.

**AVA Art Tour:** Shirley Dahlsten sent an invitation to her studio at the AVA Tour of Astoria, and Jo Pomeroy-Crockett handed out the

AVA brochure. The Pallete Puddlers will be at Dots 'n Doodles. TEAA will have a table.

**Advertising:** The new rack card is available. Members are encouraged to take a few and pass them out for advertising. There is also a Membership Brochure and a Classes Brochure. The brochures were created at the recommendation of the Marketing Committee.

**Credit Card Sales:** Jeanette Davis went to Bank of Astoria and TEAA will sign up to use a credit card with the old fashioned swipe because of the low volume of business. A call will need to be made, but it is far less expensive for the organization. When the exact information is available, a procedure will be put together for the card, who will take on the charge, and any other information members will need to know. Debbie Jansen, Jane Means and Jeanette Davis will provide a draft procedure at the next meeting.

**For the Good of the Order:**

**Jo Pomeroy-Crockett** invited everyone to a show at the Seaside Public Library in the main Library and the community room. Lynda Campbell included a presentation on a display on the work that Jo has published. The work will be available until mid-September.



**Plein Air paint-off** in Naselle on August 4<sup>th</sup> It is \$15 for lunch at Fred Johnson's Farm. Call Susan Bish or Sally Bailey. Susan Thomas told the group that the Food Pantry needs assistance. Call her if interested.

Meeting Adjourned 11:50 am

Respectfully Submitted, Kitty Paino

## Trail's End Art Association

656 Ave A St.  
Gearhart, Oregon  
PO Box 2351  
Gearhart, Oregon 97138

Email:  
[trailart2010@hotmail.com](mailto:trailart2010@hotmail.com)  
[www.TrailsEndArt.org](http://www.TrailsEndArt.org)

### Fall Preview

#### Art Filled Riddles & Magic

**Oct 13-Dec 22, 10am-1pm.** Shirley Dahlsten leads an experience to become submerged in painting and sculpting. \$50 & optional donation. Contact Shirley to register at [jandsdahlsten@gmail.com](mailto:jandsdahlsten@gmail.com)

#### Plein Air

Open to all members. Painting in various regional locations. Contact Sue Bish 503-861-1428 to check on schedule changes.

**Pastel Studio.** Join in at any time. Call Pastel facilitator **Kathy Moberg** 738-6653 for more information.

**Watercolor Techniques, Carol Couch, Instructor.** A new idea, skill, project, etc. each week. Just 'Drop In'. \$15 a session for members, \$18 for non-members. Contact 360-665-5319 for more information. Starts again in the fall. **Begins September 7th.**

**Watercolor Studio.** Join at any time. Call facilitator **Susan King**, 503-861-0260 for more information.

**Collage & Other Fun Stuff.** Call facilitator **Mary Ann Gantenbein** 503-861-2832 for more information

**Drawing, Judith Fredrikson, Instructor.** Members pay \$15 per sessions Non Members \$18 per session. To register (call 503-791-0759) **Begins September 9th**

**SUMMER GALLERY  
HOURS ARE 11AM-5PM  
Gallery Closed Mon-Tue**

## Trail's End Art Association Calendar

### August 2011

Sunday	Monday	Tuesday	Wednesday	Thursday	Friday	Saturday
31 <i>Painting with Colored Pencil Kristy Kutch 9-4</i>	August 1 <i>Gallery Closed</i>	2 <i>Gallery Closed</i> <b>Creating a Personal Journal</b> Scott Leahing 9:30-3:30  <b>Openings</b>	3 <i>Open Studio</i>	4 <i>Open Studio</i>  <b>Plein Air</b>  <i>Fred's Farm in Naselle</i>	5 <b>Acrylics &amp; Creating Collage Materials</b> Mary Ann Gantenbein 9:30-3:30  <b>Judged Show Available For Viewing</b>	6 <b>Gala Reception 4-7pm (awards at 5pm)</b>
7 <i>Open Studio</i>	8 <i>Studio Closed</i> <b>Scurvy Elephants</b>  Reception for Scurvy Elephants Dots 'n Doodles 5-7:30 pm	9 <i>Studio Closed</i> <b>Scurvy Elephants</b>	10 <i>Studio Closed</i> <b>Scurvy Elephants</b>	11 <i>Studio Closed</i> <b>Scurvy Elephants</b>  <b>Plein Air</b>	12 <i>Studio Closed</i> <b>Scurvy Elephants</b>  Final Critique for Elephants around 4pm. Members welcome	13
14 <i>Open Studio</i>	15 <b>Transparent Painting Landscapes &amp; Cityscapes</b> Fealing Lin 9:30-4:00  <b>Class Closed</b>	16 <b>Fealing Lin</b>	17 <b>Fealing Lin</b>	18 <i>Open Studio</i>  <b>Plein Air</b>	19 <i>Open Studio</i>	20 <b>Beginning Encaustic</b> Barbara Mallon 9:30-3:30  <i>Openings</i>
21 <i>Open Studio</i>	22 <b>Acrylic Hand Painted Papers &amp; Collage</b> Linda Rothchild-Ollis 9:30-3:30  <b>Class Closed</b>	23 Linda Rothchild-Ollis	24 Linda Rothchild-Ollis	25 <b>Putting Light in Your Watercolors</b> Sheila Parsons 9:30-3:30  <b>Openings</b> <b>Plein Air</b>	26 <b>Painting Haystack Rock</b> Judith Fredrikson 9:30-3:30  <b>Openings</b>	27 <i>Open Studio</i>
28 <i>Open Studio</i>	29 <i>Open Studio</i>	30 <i>Pastel Group</i>	31 <b>Watercolor group</b>	<b>No Board or General Meeting in August</b>  <b>Pick up Judged Show Art Sept 11-12</b>  <b>Do you have a Newsletter item?</b> Contact Kitty 503-325-0342, or <a href="mailto:paino2060@charter.net">paino2060@charter.net</a>		