

Trails End Art Association

Nov-Dec 2011

SPECIAL DATES

- November 20-21
Art Intake
- December 3
Special Event 2-5pm
- December 9
Board Meets
9:30am, General Meeting POT- LUCK 11am

Trails' End Art Association presents a month long exhibit highlighting small works and inexpensive gift items. Bring your cards, prints, and work that you would like to sell under \$100. And be sure to attend the December 3rd Special Event!

2011 TEAA BUSINESS SPONSORS

Eagle Financial Group

Windermere Cronin and Caplan Realty Group

Interested in serving as an officer? Contact

*Jeanette
338-6174 or
davis_jeannette
@hotmail.com*

Chuck Overton Shares Information



Chuck Overton does digital photography, but shared printing and mounting techniques that can be used in almost any two-dimensional medium at the No-

vember General meeting.

Chuck was the featured artist in June, but was unable to present to the group. His photographs are printed on canvas and then mounted with a system that displays them much like a stretched canvas.

He gets his printing done at Staples (TEAA has a discount at Staples that can be accessed by giving the checker the TEAA Center phone number). An original piece brought to Staples is



limited to the 11x17 scanner. Once digital, it can be copied in larger formats. He has been playing with different sizes.

He mounts his art on a stretcher frame from a system that he purchases at Pro-Photo in Portland for approximately \$15 per frame. The system is a light weight square with side bars that slide into the corners. There is double-sided tape on the edges. The print folds around the edges and held in place by double-sided tape and pins. To protect the art, he uses a spray acrylic to protect the canvas. Three coats will protect the art work. He purchases the spray at Dots 'N Doodles. Mounting instructions can be found on YouTube. Search, 'acrylic photo art mounting'.

Chuck also does cards at Staples. He uses the additional discounts that the store offers periodically. The cost per card is approximately \$1.05. He takes his camera's storage card to Staples and they are able to take the art directly from the card. But digital pictures can be brought in on a flash drive or emailed.

A Major Change

TEAA does not have a candidate running for President. That will mean a dramatic change in operations. Enough volunteers have stepped forward to be on the Board to manage day-to-day activities, but some things will need to change to accommodate the new situation. On thing changing is that members at the November General Meeting voted to only have four General Meetings a year. The remaining Board members will meet monthly to take care of TEAA business and maintenance. Members are invited to those meetings. If you are interested in being President, call or email Jeanette Davis (see sidebar on this page). She can also describe the President's duties.

TEAA Members At Fair

Several TEAA members will be participating in the AVA Holiday Art Fair on December 3, 11am-4pm at the Astoria Arts & Movement Center, 11th and Harrison in Astoria. Members showing are Judith Fredrikson, Joan Masat, Kitty Paino, Jo Pomeroy-Crockett, Gheri Fouts, Bill Vleck, and Ellen Zimet. Other artists include Noel Thomas, Charles Schweigert, Jennifer Goodenberger, Ann Phillips, past member Cheryl Silverblatt and more.

Minutes November 11, 2011 General Meeting

Members Present: Jeanette Davis, Beverly Peck, Kitty Paino, Lou Kister, Jane Means, Mary Ann Gantenbein, Sue Beeman, Pat Button, Chuck Overton, and Michael Muldoon

Call to Order: The meeting was called to order at 11:00 a.m. by President, Jeanette Davis

Minutes: There were no changes to the October General Meeting minutes.

Treasurer's Report: Beverly Peck reported that TEAA brought in less than ½ of what was spent, but that it is expected this time of the year. Three pieces were sold for \$188 (not including cards). Her report included that TEAA will end the year solvent. She also reported that the Sally Bailey fund was transferred to the Capital One account.

Committee Reports:

Membership - Malcolm Smith is the one new member this month.

Gallery —There were 60 visitors and \$188 in art (not including cards) sold.

Open House - The Open House in November had 29 visitors. Volunteers are needed for the December Special Event. Members are asked to contact

Susan Thomas 503-717-5092. Michael Muldoon suggested that volunteers bring additional paintings to display as a reward. They can then send a note to their friends and potential buyers to attend the show. The membership seemed amenable to the perk.

Demonstrators – Susan Bish will demonstrate in December and Lou Kister in February

Garden Committee – Janet Bland notified the Board via email that the committee will plant a Ginko tree on the NE corner of the building in memory of Sally Bailey as their memorial.

Old Business

Election of Officers:

Only 10% of the ballots have been returned and there are no volunteers for Secretary or president. An email will be sent out asking for input on the candidates.

Signs for Open House: Michael Muldoon got the open house banner and sandwich sign posters at no charge, but he felt they were too small. He will explore larger signs.

New Business -Suggested change in meeting times for 2013: By consensus, the Board decided to

bring a proposal to the General Meeting about a change in meeting times. A recommendation will be made to membership to have four General Meetings per year and make each a potluck, with the flexibility to call other General Meetings and Board meetings as needed. Although it is expected that Board meetings will continue to be monthly. The reason for the change is the lack of members who wish

to participate in the operation of the facility and association. Planning meetings emphasized member's

wishes to not spend hours on volunteering that cuts in to their art time. Without a Presidential candidate, the formation of agendas and other kinds of preparation for a

General Meeting will need to be terminated until further notice or some-one steps forward. As per the bylaws, a motion can be brought to the General Meeting and approved by 50% of those attending that meeting. Jane Means moved *to go to quarterly potluck meetings in 2013*. Lou and December Kister seconded. **Motion Approved Unanimously.** Meetings will be in March, June, September.

Theme for December show: President Davis brought the idea of changing the December show to smaller and less expensive art pieces to encourage members to bring in small works or works under \$100 to the December show. More expensive art will also be accepted. Due to a mistake in the newsletter, the new intake for art for December has been extended to November 20-21. This will allow getting the word out about the theme. This show will extend through the end of December. There were no objections and a suggestion to encourage smaller works as well, 8x10 or 9x12.

Paid Ad for December: There will be a paid ad to announce the unique art gifts that will be offered in December.



Michael Muldoon box from this month's Gallery show

Volunteer to help host an Open House or Special Event, and bring additional art to sell that evening as a reward! Call Susan Thomas to volunteer

Gearhart Park: The City Council approved the Gearhart Planning Commission's recommendation to rezone the land adjacent to Trail's End as a park. A park with low plantings and paths has been suggested for the \$50,000 anonymous donation for the project.

**PLEASE RETURN
YOUR ELECTION
BALLOT BY
DECEMBER 10th!**

Elections: Members were informed that only 10% of the election ballots had been returned and there still wasn't a Secretary or Treasurer, although several write in -votes for different members. Voting ends December 10th.

Membership Dues: If members pay their dues prior to January 1st, they will again receive a \$5 discount on their membership. This year members may pay by either credit card at the gallery or on PayPal online. But they will be responsible for an additional \$2.50 fee for using the card. As always, checks and the membership form can be either brought in to the office, or a check with the form mailed to TEAA. TEAA has approximately 115 members.

Good of the Order

Signage: Chuck Overton brought up a need to have an 'open' sign on the south side of the building. He will research potential signs.

Special Gallery Show: Chuck also brought up a possibility of focusing on realtors. Chuck and Michael Muldoon will meet and speak with Susan Thomas about developing a special show in early spring with a theme of painting the north coast and inviting realtors. They were

asked to bring their ideas back December 9th. Pat Button brought up the idea of coordinating the painting of local houses with the annual tour of Gearhart cottages.

Holiday Potluck and Gift Exchange: The December 9th General Meeting

will be a potluck and gift exchange. Members are asked to bring new or slightly used art.

A presentation by Chuck Overton, a past featured artist, followed the meeting.

Meeting adjourned 12:45 pm . Respectfully submitted, Kitty Paino, Secretary.

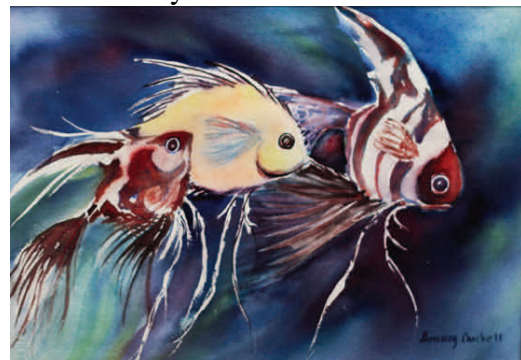
Something New in the Gallery in December

The December deadline for art intake has been extended to November 20-21. A suggestion for artists is to bring either small works that are less expensive, or other art that is under \$100. Go ahead and bring additional pieces. A special ad about the unique gifts will be placed in newspapers to draw buyers. It is only a suggestion though, and you may bring whatever art you would like to submit, regardless of the cost.

From a 1915 Cookery Magazine, in the section: Here's Many Helpful Hints:
Pot Scraper. - - The best pot scraper in the world is a painter's palette knife, obtainable where artist's materials are kept, and usually costs twenty-five cents.

Joy Pomeroy-Crockett Featured

Jo Pomeroy-Crockett was selected as this month's featured artist. Jo directed this year's annual show.



Jo has a new website that features both her art and the books that she has written. Visit www.jopomeroycrockett.com

Suggestions for Sally Bailey Memorial

The Garden Committee will be planning a Ginkgo tree in Sally's honor of her helping with the beautiful gardens. Individuals can still donate to the Scholarship fund by making a check to TEAA, but specifying that it is for that fund. But suggestions are needed from TEAA members about what the entire group would like to do in her honor. Please contact Jeanette Davis or bring your ideas to the December potluck.

Angela Baumgartner

Former TEAA member and freelance artist Angela Baumgartner passed away earlier this year.

Thank you Tracy Hale for taking the photographs of Gallery art for the monthly slide show on the TEAA website. If you haven't seen her photos on our site, visit www.trailsendart.org

Trail's End Art Association

656 Ave A St.
Gearhart, Oregon
PO Box 2351
Gearhart, Oregon 97138

Email:
trailart2010@hotmail.com
www.TrailsEndArt.org

Classes

Art Filled Riddles & Magic
Oct 13-Dec 22, 10am-1pm. **Shirley Dahlsten** leads an experience to become submerged in painting and sculpting. \$50 & optional donation. Contact Shirley to register at jands-dahlsten@gmail.com

Plein Air

Open to all members. Painting in various regional locations. Contact **Sue Bish** 503-861-1428 to check on schedule changes.

Pastel Studio, Join in at any time. Call Pastel facilitator **Kathy Moberg** 738-6653 for more information.

Watercolor Techniques, Carol Couch, Instructor. A new idea, skill, project, etc. each week. Just 'Drop In'. \$15 a session for members, \$18 for non-members. Contact 360-665-5319 for more information.

Watercolor Studio. Join at any time. Call facilitator **Susanne King**, 503-861-0260 for more information.

Drawing, Judith Fredrikson, Instructor. Members pay \$15 per sessions Non Members \$18 per session. 503-791-0759)

Collage & Other Fun Stuff. Call facilitator **Mary Ann Gantenbein** 503-861-2832 for more information

**WINTER GALLERY
HOURS 11AM-3PM**

Gallery Closed Mon-Tue

Trail's End Art Association Calendar

December 2011

Sunday	Monday	Tuesday	Wednesday	Thursday	Friday	Saturday
				1 aRT FILLED rIDDLES & mAGIC <i>S. Dablsten</i> 9:30-3:00	2 Drawing <i>J. Fredrikson</i> 9:30—12:30 Collage & Other Fund Stuff <i>M. Gantenbein</i> 1-4	3 <i>SPECIAL EVENT 2- 5pm Susan Bish Demon- strating</i>
	GALLERY CLOSED Mondays & Tuesdays					
4 <i>Open Studio</i>	5 <i>Open Studio</i>	6 Pastel Studio <i>K. Moberg</i> 10 am-3pm	7 Watercolor Techniques <i>C. Couch</i> 9:30-12:30 Watercolor Studio <i>S. King</i> 1-4pm	8 aRT FILLED rIDDLES & mAGIC <i>S. Dablsten</i> 9:30-3:00	9 Business Meeting 9:30am General Meet- ing 11:00am POTLUCK	10 <i>Open Studio</i>
11 <i>Open Studio</i>	12 <i>Open Studio</i>	13 Pastel Studio <i>K. Moberg</i> 10 am-3pm	14 Watercolor Techniques <i>C. Couch</i> 9:30-12:30 Watercolor Studio <i>S. King</i> 1-4pm	15 aRT FILLED rIDDLES & mAGIC <i>S. Dablsten</i> 9:30-3:00	16 Drawing <i>J. Fredrikson</i> 9:30—12:30 Collage & Other Fund Stuff <i>M. Gantenbein</i> 1-4	17 <i>Open Studio</i>
18 <i>Open Studio</i>	19 <i>Open Studio</i>	20 Pastel Studio <i>K. Moberg</i> 10 am-3pm	21 Watercolor Techniques <i>C. Couch</i> 9:30-12:30 Watercolor Studio <i>S. King</i> 1-4pm	22 aRT FILLED rIDDLES & mAGIC <i>S. Dablsten</i> 9:30-3:00	23 Drawing <i>J. Fredrikson</i> 9:30—12:30 Collage & Other Fund Stuff <i>M. Gantenbein</i> 1-4	24 <i>Open Studio</i>
25 <i>Christmas</i>	26 <i>Open Studio</i>	27 Pastel Studio <i>K. Moberg</i> 10 am-3pm	29 Watercolor Techniques <i>C. Couch</i> 9:30-12:30 Watercolor Studio <i>S. King</i> 1-4pm	30 <i>Open Studio</i>	31 Drawing <i>J. Fredrikson</i> 9:30—12:30 Collage & Other Fund Stuff <i>M. Gantenbein</i> 1-4	Pick up art January 2. Center closed 3-16 Volunteer to clean Center January 5-6

Do you have a Newsletter item? Contact Kitty 503-325-0342, or Paino2060@charter.net