

Trail's End Art Association



Artist of the Month



Vicki Baker

Vicki Baker is July's Featured Artist of the Month.

Before retirement, Vicki was an elementary school teacher for 30 years in both the Midwest and Oregon. Although no formal background in art when she was younger, she began taking classes the

last ten years of her teaching to help her students.

Vicki and Jan Faber are celebrating 25 years together and are now snow birds, living part time in Florida and part time in Astoria.

The paintings selected this month were excellent examples of the monthly impressionist theme. But Vicki wanted to share her love for the monoprint process and shared several pieces of work reflecting the process, including prints she made with plants. She also announced the upcoming class on Printmaking being taught by Royal Nebeker the first two weeks of August 10-3. Visitors are welcome to watch the process. (Continued on page 4)



Monoprint

Invite your friends to join you at the Gala Artist Reception for the 60th annual Judged Competition on Saturday, August 7th. Wine and refreshments will be served.

Center Is Wireless

The Trail's End Art Center now has wireless Internet Access. The code to access it can be found in the minutes. The Board asks that members use the same caution that they would at home to protect the computer from viruses. Please do not respond to messages asking for firewall setup. Don't open suspicious emails. Download files only from trusted sites. Remember, utilization of the computer is for adult members of TEAA only.

The TEAA website can be accessed to get more information on many artists when talking to potential customers. There are also many incredible art-related sites for Gallery sitters to review and for instructors to access for their classes. Our new email address is the following:
trailsend2010@hotmail.com

SPECIAL DATES

- July 27 Sketch Journaling
- July 28 Crinkle Paper Techniques w/watercolor
- July 29 Using Gouache
- July 30 Fun with Acrylics
- July 31-Aug 1 Pick Up a Pencil & Paint
- August 1-2 Pick up July Art and Enter August Show
- August 6-7 Lino Block Printing
- August 7 Gala Artist Reception 4-8pm
- August 10 Illuminating Letters
- August 11 What To Do With Your Dogs/Collage
- August 12-13 Painting on Plexiglass & Other Surfaces
- August 14 Painting Rain
- August 17-19 Transparent Watercolors
- August 20&21 Drawing the Right Way
- August 22 & 28 Fused Glass & Jewelry
- August 23-25 Uncovering Your Inner Artist
- August 26-27 Acrylic Hand Made Paper & Sustainability Art

Member's Corner

Call For Art

The **Au Naturel** deadline this year is November 7th (earlier than previous years) www.aunaturelastoria.com

Trail's End Art Association 60th Judged Competition! See enclosed submission information.

Member's Shows

See Work by **Vicki Baker** at the *Mid-summer Art Show* at Studio 11 (the lower floor of the Elks building on 11th and Exchange. Open Thursday-Sunday until July 31st.

Your Help Needed

If you have some extra time this summer, your help in keeping the Center open more hours will help us bring in needed income. The Association's budget for the year is made primarily during the summer months.

A few example of additional volunteer hours might be 9-11 am on weekends in August, or any time available on Mondays or Tuesdays.

Call Mary Ann Gantenbein if you would like to help. 861-2832 or gantenbeinc@aol.com

Amazing Miniatures

Mark Murphy and Lloyd Cook provided a fascinating look at miniature furniture and paintings at the July General Meeting.

Mark is a member and teacher for the International Guild for Miniatures Artisans, which was founded to promote fine minia-



Mark Murphy & Lloyd Cook

tures as an art form; increase awareness of workmanship through public education; and recognize and honor qualified artisans. He works in 1" scale to make both historically accurate miniatures, as well as original work. Mark teaches annually at the Guild School at the Maine Maritime Academy, in Castine, Maine.

Lloyd Cook is a pastel artist who is now miniaturizing his work and his paintings are meticulous works of art in miniature.

Members were treated to an array of miniatures in wood, pottery, tapestry, pastels, watercolors, tile, and clothing. More information on miniatures can be found at www.igman.org.



Mark Murphy Miniature Hutch, Chairs, and tiled table at 1" scale

A Taste of Art Update

There are two new workshops added to the list of workshops in August.

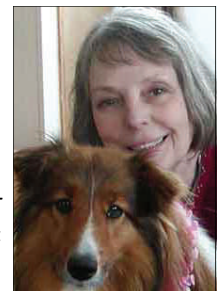
Susan Bish is offering a half day on what to do with those paintings that aren't so great, but you haven't thrown away. Her approach?



Susan Bish

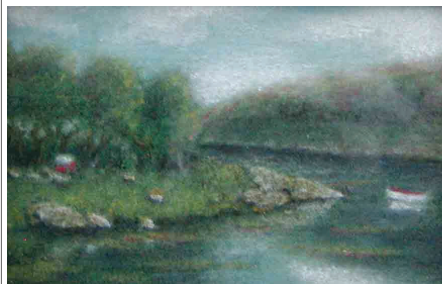
Tear them up and create something new! *What To Do With Your Dogs*, Wednesday August 11, 9:30-12:30. \$15 donation to TEAA.

Jo Pomeroy-Crockett again offers help to create on an alternative surface. *Painting on Plexiglass & Other Fun Surfaces* is offered on Thursday and Friday, August 12-13, \$100.

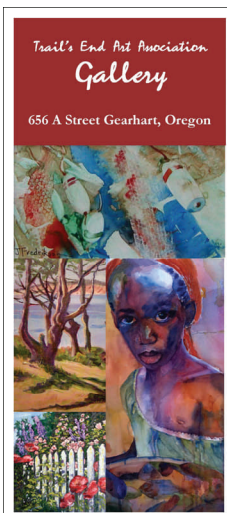


Jo Pomeroy-Crockett

There is only one seat left in Kristy Kutch's workshop, and a few seats in Fealing Lin's sessions. The other classes all have openings, but some are filling fast. Register at the Center, online, or contact Ellen Zimet, ellenzimet@earthlink.net or 503-861-0718



Lloyd Cook Pastel 1.5"x 3"



Rack cards advertising the Gallery are now at the Seaside Chamber

Meeting Minutes July 16, 2010

CALL TO ORDER

The meeting was called to order by President, Mary Ann Gantenbein at 11:01. Members present include Patty Davis, Beverly Peck, Howard Peck, Vicki Baker, Susan Bish, Martha Johnson, Peggy Hines, Michael Muldoon, Ellen Zimet, Kitty Paino, Judy Fredrikson, Deanne Johnson, Louise Birkenfeld, Pat Button, Jeanette Davis, and Mary Ann Gantenbein. President, Mary Ann Gantenbein introduced our visitors, Katherine and Keith Sluder and then went around the room and had everyone present introduce his or herself. She then discussed the following;

Gallery Report

*We currently have 100 members. We had 306 visitors so far this month. There were 11 on July 4th and 68 during the evening reception on the 3rd. We had an intake of \$967 for paintings, cards and prints that have been sold this month, so far. She also reported on the revised sign on the west side of the building. Thanks

go to Janet and Jack Bland for all the work they have done in this beautification effort.

*The need to extend weekend hours. There was a discussion on the practicality of being open more hours during the day in the summer; e.g. starting at 9:00 on weekends. It was suggested that if members came to work on their projects on the weekends that they open the sign on the north wall.

*Jane Means has had some wonderful experiences with her "cats" embracing painting, and, as a result, will like to enter these pictures in the August Show under the children's section. For all of you with "fur children" who like to paint, a non-judged, non-awarded category will be available during the August Show for any entries. It was suggested that a bio with a picture of the animal painting also be included with the submission.

Treasurer's Report

*Beverly Peck reported that as of July 1, 2010 our Bank of Astoria balance was \$1442.94.

*Our income was \$2137.67 and our expenses were \$685.14 leaving a balance of \$2482.66. A copy of the report was placed on everyone's table.

Promotion Report

Ellen Zimet reported that the August classes are going well. At present, Kristy Kutch has 13 enrolled with one space open. Fealing Lin has 8 enrolled with 2 to 3 spaces open, Linda Rothchild Ollis has 6 enrolled with 4 spaces open, Scott Leahing has 8 enrolled with 2 spaces open, Becky Read has 3, Rhonda 1. The other classes that are handled individually by the teachers report minimum enrollment. Enrolled means registered and paid.

The Means' family is donating a \$50 gift certificate for a dinner at Fulio's' Restaurant. Raffle tickets will be on sale at the August reception.

New Business

*The possibility of an after school and/or weekend day art program for students in the area. Several of the members had observed the puppet show put on by Rhonda Grudnic and were enthusiastic about the possibility of exploring an art education program for youth.

*The need for "flutter flags" that could be displayed on the lawn facing Pacific Way for attracting more people to our site. Two flags and their stands would cost approximately \$300.

Kitty Paino made a motion to purchase the flags; it was seconded by Patty Davis. The garden committee will be asked for input on flag placement. The motion was carried. Reminder: The sandwich sign that has to be carried to the street was a requirement from the state for obtaining the signs on Highway 101.

*The Internet is up and running. It is available for members to use to search the Internet for artistic and educational purposes. If a member wished to use the Internet, he or she should turn on the computer. The password is TEAA (in caps). Find the Internet Explorer Icon – double click and then Explore. If you know the website of the site you are seeking, type the name into the bar across the top and hit enter. If you need additional instruction, you can call Patty Davis or Jeannette Davis or let either of them know that you would be interested in a class. We have a wireless router installed, so if you have a laptop with wireless accessibility, you will be able to use it at the site. Contact Maryanne for the wireless code. At this time e-mail use is just for Board Members. In addition, the Board cautions members to use the Internet sensibly. Do not react to any messages that tell you to click here

to upgrade your virus protection or your programs. Keep us virus free by asking questions.

Featured Artist Presentation

Mark Murphy and Lloyd Cook made a presentation on miniature furniture and other items. We were all amazed at the quality of their work.

Artist of the Month

Vicky Baker, artist of the month shared her current art experiences with us. She is working with monoprints and had several examples of her work to share. Vicky will have a showing at Studio 11 in Astoria.

Vicky was an elementary teacher for 32 years, teaching in Illinois, Northwest Ohio and Oregon. She and her husband have recently celebrated 25 years of marriage. She shared with us that she uses only cheap hardware brushes, three colors of acrylics and paints on textured paper and canvases.

Other

*We then welcomed Keith Sluder, who has recently moved to Oregon from the East Coast. Keith is a prolific artist and has his paintings in major collections throughout the world. He shared some of his techniques with us and agreed to provide a class in the fall for interested artists. Look for more information coming in August. For more ideas about his work visit his website at www.KeithSluder.com.

*Sue Bish reported that Coastal Artist Showcase is soliciting Art Work of any kind for a special event at their facility on July 22nd. Call 503 470-6161 for more information. Reminder: The times for submitting entries for the August Show are Sunday, July 31st 4-6 and Sunday August 1 from 10-4.

President Mary Ann Gantenbein adjourned the meeting at 12:59 a.m.

Respectfully submitted: Ellen Zimet

2010 Suggested Monthly Gallery Themes

August: Annual Show

September: Realism

October: Surrealism

November: Simplicity

December: Spirituality

Surprise Speaker

Keith and Barbara Sluder dropped in to visit the General Meeting. They reside in Bend. Keith presents art workshops up and down the coast. He has done portraits of celebrities such as William Shatner and Ernest Borgnine.



Trail's End Art Association

656 Ave A St.
Gearhart, Oregon

PO Box 2351

Gearhart, Oregon 97138

Phone 503-717-9458

Email: trailsend2010@hotmail.com

www TrailsEndArt.org

Plein Air

Open to all members. Painting in various regional locations. Contact **Sally Bailey** 503-325-1589 to check on schedule changes.

Taste of Art in Gearhart runs June 27-Aug 28 .See website and brochure at the Center for more information and registration.

Vicki Baker continued



The Chef-Vicki Baker Acrylic

When discussing her acrylics, Vicki says she uses cheap hard bristle brushes from the hardware store, 4 inexpensive tubes of acrylics that she mixes, and does mostly dry brush. She paints on heavy paper.

Trail's End Art Center Calendar

August 2010						
Sunday	Monday	Tuesday	Wednesday	Thursday	Friday	Saturday
25 <i>Open Studio</i>	26 <i>See the Taste of Art in Gearhart Brochure!</i>	27 Developing a Sketch Journal Scott Leahing 9:30-3:30	28 Watercolor Video Presentation Ellen Zimet 10-3	29 Using Gouache Carol Couch 9-3 <i>Plein Air</i>	30 Fun with Acrylics Mary Ann Gantenbein 10-3	31 Pick up a Pencil & Paint Kristy Kutch 9-4
August 1 Pick up a Pencil & Paint Kristy Kutch 9-4 <i>*Bring August Art After 4pm only if essential</i>	2 Bring August Art 10am-4pm	3 Gallery Closed.....	4	5 Judging <i>Plein Air</i>	6 Lino Block Printing <i>Sheila Brown</i> 9:00-12:00	7 Lino Block-Printing (cont.) Opening Reception Judged Competition 5-8pm
8 <i>Open Studio</i>	9	10 Illuminating Letters Becky Read 9-12	11 What To Do With Your Dogs/ Collage Susan Bish 9:30-12:30	12 Painting on Plexiglass Jo Pomeroy-Crockett 9:30-3:00 <i>Plein Air</i>	13 Painting on Plexiglass Jo Pomeroy-Crockett 9:30-3:00	14 Painting Rain <i>Carol Couch</i> 9:00-12:00
15 <i>Open Studio</i>	16	17 Transparent Watercolors Fealing Lin 9:30-3:30	18 Transparent Watercolors Fealing Lin 9:30-3:30	19 Transparent Watercolors Fealing Lin 9:30-3:30 <i>Plein Air</i>	20 Drawing The Right Way <i>Sheila Brown</i> 9:00-12:00	21 Drawing The Right Way <i>Sheila Brown</i> 9:00-12:00
22 Fused Glass & Jewelry Albert Wood 9:00-1:00	23 Uncovering Your Inner Artist Rhonda Grudenic 9:30-3:30	24 Uncovering Your Inner Artist Rhonda Grudenic 9:30-3:30	25 Uncovering Your Inner Artist Rhonda Grudenic 9:30-3:30	26 Acrylic Hand Made Paper Linda Rothschild-Ollis 9:00-3:00 <i>Plein Air</i>	27 Acrylic Hand Made Paper Linda Rothschild-Ollis 9:00-3:00	28 Fused Glass (cont.)