

Trail's End Art Association



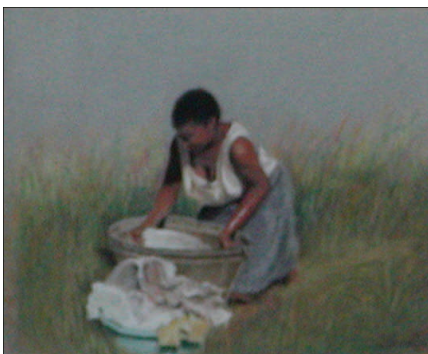
Deanne Johnson

Deanne Johnson is the Trail's End November Featured Artist. Deanne is originally from Phoenix, Arizona. Her interest in art led her to studying it at Arizona State University, Tempe and although she had originally planned on teaching art, her life took a different direction

Deanne shared stories about one of her first jobs before she was married. She became the Assistant to the Head Tennis Pro at an exclusive Scottsdale resort. As a young girl she got to meet many famous people. A few included Elton John, Johnny Carson, Hugh Hefner's daughter and Joan Kennedy.



Deanne's wooden cats



Art done while in South Africa

While in College she was a Young Life Volunteer which eventually led her to a job in Germany working with Army youth programs.

He future husband was also doing the same work and they married while still in Germany. From Germany they moved to South Africa to continue working with youth. They were there

during Apartheid and stayed there for 8 years. Deanne still misses friends she made there. After 11 years overseas they moved to Colorado Springs where they did cross cultural training. From there they lived in Southern California for 8 years before moving to Gearhart for her

husband's job. She has lived in Oregon for 5 years.

Deanne shared some of her pastels, including a striking piece done when she lived in Africa. She also played a DVD of a unique church art project that she helped lead for several years while in California that included tableaux of humans painted as either classical sculptures or pictures from the Bible against a painted background.

Elections

The following slate of candidates were selected as TEAA Officers for 2010

President: Sheila Parsons; **First Vice-President:** Patty Davis; **Second Vice-president:** Jeannette Davis; **Treasurer:** Beverly Peck; **Secretary** Lou Kister; **Member-at-Large** Susan Bish.

Inside this issue:

President's Corner	2
Beeman's Secrets	2
Holiday Party	2
This 'n That	2
Suggested Theme	2
Monster Bash Update	2
Minutes	3
Member Exhibits	3
Calendar	4
Classes	4
Dues & Liability Insert	

SPECIAL DATES

- November 29-30 Submit December Art
- December 7, 5-8pm Artist Reception
- December 11 Business Meeting 10am
- December 11 Holiday Potluck 12 noon

President's Corner



Swan Song

It has been a great pleasure serving you as your 2009 TEAA President. Thank-you. There are so many wonderful and talented people in this organization. You are the ones that make everything happen and work so hard to make it right. Together we have made some changes to the building, the garden, the meetings, the newsletter, the library, the classes, and more recently we're trying out an art advisory board. I didn't do the work. You did. You take pride in your organization. You know who you are and where you want to be. You work hard to get there. With your creative ideas TEAA will always be evolving. That's the way it should be. Sadly, I will not be here for the next chapter in your growth. Life happens and we will be moving. I will miss each of you. I would love to stay in touch and marvel at your achievements. I will be in and out over the next few months and I hope to see you at our Christmas party but for this episode in life this is my swan song of farewell.

~Sheila Parsons

Suggested Gallery Theme

Dec Winter in the NW

Beemer's Secrets

The audience at the November General meeting were treated to the secrets of Sue Beeman's unusual and beautiful collage work. Even though Sue kept insisting that it was simple, the audience agreed that her results are very imaginative creations.



First Sue finds unusual fiber based hand-made papers. She uses Mod Podge to attach them to a stretched canvas frame. She then uses pen and ink to find her design, which the paper often leads her to when working. She also uses the Podge to adhere leaves over the top of the paper. She originally used dried leaves, but they were brittle



and she found that she can use them when they are still flexible and they will also lay flat on the canvas easier. She uses Rub and Buff (antiquing) to bring out the extrusions. She then uses gold leaf with sizing. She doesn't use a sealer over the leaf since it changes the color. She also adds touches of acrylic. No personal secrets were shared, but we'll keep trying.

Holiday Party



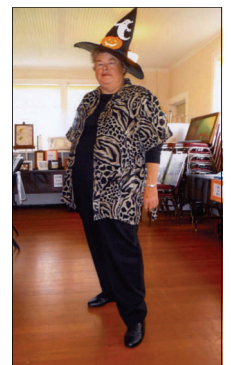
On December 11th, the annual Holiday Party and Potluck will take place at noon, after the 10am Business Meeting. If you would like to participate in the gift exchange, bring any art related item such as art supplies, books, or gift certificates. You do not need to participate in the gift exchange to join the party and potluck!

This 'n That

- ❖ If someone wants to join or pay dues, Gallery sitters need to provide the *Membership Renewal and Liability Agreement*, which can be found at the front desk.
- ❖ Elizabeth Bonn lost a small painting of a female figure in blues and greens during the Monster Bash. If you find it call her at 360-642-4531.
- ❖ The new Art Gallery Advisory Committee welcomes your input on anything having to do with the Gallery, including monthly themes, advertising, hanging, etc. Contact Susan Bish 861-1428 if you have ideas or concerns. Other members are Joan Masat, Jane Audrey, Jane Means and Lynda Campbell.
- ❖ Donations in October were received from Brooke Roberts, Sandy Rae, and Susan Bish.
- ❖ There are holiday cards available for you to make a holiday donation in memoriam or as an honor to a friend or family member next to the Donation Box.

Monster Bash

Carol Couch and the volunteers who worked on the Monster Bash were thanked at the November General Meeting. Everyone participating had a great time



Carol Couch isn't really a witch

and 15% of the money received was donated to Trail's End Art Association. Joan Taplin provided pictures of the event.

General Meeting Minutes November 13, 2009

Call to Order

Vice-President Bernadine Thomas called the meeting to order at 12:59 p.m. Members present were Vice-President Bernadine Thomas, Member-at-Large Susan Bish, Jeannette Davis, Jane Means, Louise Birk-enfeld, Jane Audrey, Janet Willener, Robert Blackburn, Janice McMahan, Sue Beeman, Marji Wilcoxon, Patty Davis, Carol Couch, Webmaster Kitty Paino, Millie Moebius, Tom Means, Chris Bryant, and Secretary Lou Kister.

Treasurer's Report

On October 1, 2009, our Astoria bank balance was \$1689.49. Our income in October was \$240.61 and our expenses were \$501.06 leaving a balance of \$1,429.04. Our Capital One Money Market account balance is \$4,828.82.

Gallery Report

Jeannette Davis presented the Gallery Report. At the beginning of October we'd earned \$5,244.00 in sales. In October we earned \$906.00 making a year to date total of \$6,150.00. We'd had 1,576 visitors by October 1st. With our 214 visitors in October we have now had a total of 1,790 visitors this year. Our visitors included 23 people at our Art Walk reception and 69 visitors at our Halloween Bash.

Media Report

Judith Fredrikson recommended members explore the books we have on drawing.

Membership Report

Mary McDonald is out of the hospital.

Several members have had bad colds and flu including Susan Bish, Kathy Moberg, and Jo Pomeroy-Crockett.

Robert Blackburn has recovered from pneumonia.

Classes and Workshops Reports

Sheila Brown teaches drawing on Monday mornings. On Tuesdays pastel artists meet. On Wednesdays Carol Couch teaches

watercolor from 9:00 to 12:00. In the afternoon we have open studio for watercolor. Thursday's Experimental Painting class will have their last class on November 19th. Friday has open studio and Yupo.

Publicity Report

We had radio ads and a newspaper article for the Halloween Sale.

Old Business

Our Halloween Art Sale was very successful. We had good attendance, many sales, and positive feedback.

New Business

*Art Advisory Council: Member-at-Large Susan Bish explained that the Board has created an Art Advisory Council to provide opportunities for presenting innovative shows, to develop monthly show themes, and to handle gallery concerns. Member-at-Large Susan Bish will serve as liaison between the Board and the Council. This change will free the Board to deal

Dues Time!

The form to renew your dues and the annual liability form is inserted in this Newsletter. Be sure to submit them by the end of December!

creating classes, etc *Reception Attendance: We are looking for ideas to encourage attendance at our Art Walk gallery openings. Winter hours from October to December and February to March will be 3:00 p.m. to 6:00 p.m. to allow for daytime driving. *Giving for a Cause: Local non-profits are setting up tables at the Liberty Theatre's McTavish room on December 12, 2009, to sell patrons gift cards that provide a tax free donation to a non profit of their choice. If you are interested in

participating in this, please call TEAA and let us know. We have also put a few gift cards by our donation box in the gallery. If someone wants to contribute a gift card to someone else, the gallery sitter needs to fill out a tax form.

Nominations Needed
If you are interested in becoming President, or know a good candidate, contact Lou Kister, Susan Bish or Patty Davis.

*Election Report: Because of an unexpected occurrence in her life, our current president is unable to serve in 2010. The nominating committee is

calling to find a replacement. The elected slate for the following officers is: First Vice-President, Patty Davis; Second Vice-President, Jeannette Davis; Secretary, Lou Kister; Treasurer, Beverly Peck; Member-at-Large, Susan Bish.

Announcements

Next Board Meeting: Friday, December 11, 2009, at 10:00 a.m.

Christmas Potluck and Party: Friday, December 11, 2009, at 12:00 p.m. Gift exchange of gently used art supplies

Adjournment of Business Meeting
Vce-President Bernadine Thomas adjourned the business meeting at 1:33 p.m.

Respectfully submitted,

Lou Kister, Secretary

Member Exhibits

Carol Couch is exhibiting this month at the Grace Episcopal Gallery in Astoria.

Sheila Brown was selected by jury for a one-day twenty person exhibit at the Portland Art Museum. The subject is the Columbia River.


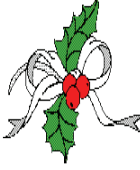

Trail's End Art Association

656 Ave A St. Gearhart, Oregon
 PO Box 2351
 Gearhart, Oregon 97138
 Phone 503-717-9458

 www TrailsEndArt.org

Trail's End Art Center Calendar

December 2009

Sunday	Monday	Tuesday	Wednesday	Thursday	Friday	Saturday
29 <i>Open Studio</i> Bring December Gallery Art	30 Drawing Experiences <i>Sheila Brown</i> 9:00-12:00 Bring December Gallery Art	Dec 1 Pastel Studio <i>K. Moberg</i> 10:00- 3:00	2 Beg to Inter Watercolor <i>Carol Couch</i> 9:00-12:00 Int Watercolor <i>different instructors weekly</i> 1:00-4:00	3 <i>Open Studio</i>	4 <i>Open Studio</i> Playing with Yupo 1:00-4:00pm	5 Artist Reception 5-8 Lino Printing
6 <i>Open Studio</i>	7	8 Pastel Studio <i>K. Moberg</i> 10:00- 3:00	9 Beg to Inter Watercolor <i>Carol Couch</i> 9:00-12:00 Int Watercolor <i>different instructors weekly</i> 1:00-4:00	10 <i>Open Studio</i>	11 TEAA Business Meeting 10am Holiday Potluck 12 noon  <i>Hanukkah Begins</i>	12 <i>Open Studio</i>
13 <i>Open Studio</i>	14	15 Pastel Studio <i>K. Moberg</i> 10:00- 3:00	16 Beg to Inter Watercolor <i>Carol Couch</i> 9:00-12:00 Int Watercolor <i>different instructors weekly</i> 1:00-4:00	17 <i>Open Studio</i>	18 <i>Open Studio</i> Playing with Yupo 1:00-4:00pm	19 <i>Open Studio</i>
20 <i>Open Studio</i>	21	22 Pastel Studio <i>K. Moberg</i> 10:00- 3:00	23 Beg to Inter Watercolor <i>Carol Couch</i> 9:00-12:00 Int Watercolor <i>different instructors weekly</i> 1:00-4:00	24 <i>Open Studio</i>	25 <i>Christmas</i> 	26 <i>Open Studio</i>
27 <i>Open Studio</i>	28	29 Pastel Studio <i>K. Moberg</i> 10:00- 3:00	30 Beg to Inter Watercolor <i>Carol Couch</i> 9:00-12:00 Int Watercolor <i>different instructors weekly</i> 1:00-4:00	31 <i>Open Studio</i>	January 1 <i>New Years</i> 	2

Beg to Inter Watercolor

Carol Couch is back with her class. \$15 for members—\$18 non. Call Carol 360-665-5319 for more information. Wednesdays 9:00—12:00

Intermediate Watercolor class is a leaderless group that watches famous artist videos and has members instruct. Call Mary Ann Gantenbein at 861-2832 or Suzanne King at 861-0260 for more information. \$5.00 donation goes to video fund

Playing with Yupo is a studio for learning and sharing techniques using yupo paper (polypropylene paper). No facilitator and no fee.

Pastel Studio, is free to members! Join in at any time. Call Pastel facilitator

Do something different this winter-TEACH! If you are interested, call Ellen Zimet at 909-930-5383 or email at Ellen at zimet@earthlink.net

Questions, concerns or additions to the Newsletter or Website? Contact Kitty Paino 503-325-0342 or email paino2060@charter.net