



A Taste of Art

Trail's End Art Association

SUMMER ART CLASSES FOR ADULTS at Trail's End Art Center in Gearhart, OR
July 27-Aug 28, 2010

This is our 3rd Annual "*Taste of Art in Gearhart*" where we bring you local, national and International Artists at reasonable prices.

TEAA is a non-profit organization and our summer program is part of our fund raising campaign. Here participants can find a fun way to help us meet

our fundraising goals.

Whether you are a watercolor artist, love acrylics, always wanted to learn to make jewelry or play with colored pencils, we have a workshop for you. Our classes are small and in most classes, all materials are supplied and you will always find a warm friendly atmosphere to work. Please join us this summer to learn a new or reinforce your artistic skills. Check out our artists on their websites.



Trail's End Art Association Welcomes Everyone!

SMALL CLASSES—no more than 12 for watercolor or 14 for drawing. Lots of individual attention.

Call Ellen for more information at 503-861-0718 or e-mail her at ellenzimet@earthlink.net

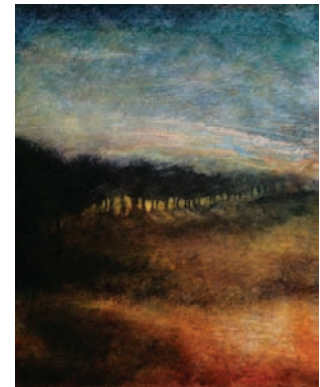
A Few Of This Year's Featured Artists



Kristy Kutch



Fealing Lin



Rhonda Grudenich



Sheila Brown



Linda Rothchild-Ollis



Becky Read

Week One

Developing a Sketch Journal - Tuesday, July 27th 9:30—3:30 Scott Leahing

Scott Leahing, artist and owner of Dots and Doodles Art Store will present a one-day workshop on how to develop and use a sketch journal to improve your drawing skills and make your sketches more meaningful to your art. The workshop is \$40 for the day. E-mail Scott at leahing@rocketmail.com or call 503-325-5081 to register and to get a materials list. Checks made out to TEAA

Watercolor Video Presentation Wednesday July 28, 10-3 Ellen Zimet

Learn the techniques of Crinkle Paper by viewing a video of master artist Cheng-Khee Chee using Masa Paper and Watercolors. Bring your paints and brushes. All other materials supplied. All levels welcome and this is an excellent workshop for first time beginners. \$15 donation. Register at www.trailsendart.org. Checks made out to TEAA

Using Gouache in Your Watercolors Thursday July 29 9:30-3:30 Carol Couch



Carol Couch, local artist, will provide a one-day workshop on how to enhance your watercolors using other aqua media. All materials are provided for you to complete two frameable paintings for \$70. To register, call Carol at 360-665-5319 or e-mail couchc335@charter.net. You can see Carol's work at trailsendart.org/Couch/couchindex.htm Checks made out to Carol Couch

Fun With Acrylics Friday July 30 10-3 Mary Anne Gantenbein

Have a fun day playing with a variety of watermedia - \$15 includes most materials. Register at www.trailsendart.org Checks made out to TEAA



Judith Fredrikson

PICK UP A PENCIL & PAINT Saturday July 31 and Sunday August 1, 9-4 Kristy Kutch



Kristy Kutch, the author of *Drawing and Painting with Colored Pencil*, the featured artist on the DVD *Colored Pencil Landscapes: Beyond the Basics* and a national presenter is back by popular demand for a two-day Colored Pencil Workshop. \$130 for two days until June 15 when the price changes to \$150. Kristy brings ideas, tons of materials and a lot of fun experiences. You will begin at least two paintings and come away with everything you ever wanted to know about how to use this media. Kristy has been "messing" with heat guns, colored pencil, Pastelbord and Colorfix paper so who knows what exciting work we will be doing this year. Register on the TEAA website at trailsendart.org e-mail ellenzimet@earthlink.net . See Kristy's work at <http://www.artshow.com/kutch>. Checks made out to TEAA

Week Two

60th Annual Judged Competition August 6th-28th

The 60th Annual Judged Exhibition is open to all artists, The Gala Opening Reception will be on Saturday, August 7, 2010 from 4 pm - 8 pm. *Submit artwork to TEAA Art Center on August 1st from 2:00 pm to 5:00 pm or Aug 2nd, from 10:00am-2:00pm.* More information available at www.trailsendart.org. Trail's End Art Center.

Painting on Plexiglass Thursday & Friday August 12-13, 9:30-3:00 Jo Pomeroy-Crockett

Paint on plexiglass and other fun surfaces. Plexiglass and some other materials supplied - \$100 for two days. Call Jo at 503-458-5541 to register and for other materials you can bring. See Jo's art at



www.trailsendart.org/Jo/jcrockett/home.htm.
Checks made out to Jo Pomeroy-Crockett

Block Printing Friday August 6 and Saturday August 7, 9-12 Sheila Brown

Sheila Brown, a local NW artist who has presented and sold work at the Portland Art Museum will provide two half day workshops in Block Printing. All levels welcomed. You can see Sheila's award winning work at trailsendart.org/



SheilaBrown/index.html. The class will cost \$70 for both days and Sheila will provide all materials to get you started in this exciting media. Please call Sheila at 503-338-6351 to register.
Checks made out to Sheila Brown

Illuminating Letters -Calligraphy Tuesday August 10, 9-12

Have fun exploring and creating illuminated letters with Becky Read. For those who wish to add another technique to their calligraphy repertoire, Gold leaf technique will also be taught. No prior experience necessary. Participants will create a beautiful letter suitable for framing in one session. All materials provided. Cost \$30. Checks made out to **Becky Read**



What To Do With Your Dogs Wednesday August 11, 9:30— 12:30 Susan Bish

Bring your old paintings and let's tear them up and make new ones - Bring your art materials and let's have fun - \$15 donation to TEAA - Call Sue at 503-861-1428 for more information and to register. See Susan's work at www.trailsendart.org/bish/indexbish.html
Checks made out to TEAA

Painting Rain in Watercolors Saturday, August 14, 9:30-12:30 Carol Couch

If you are an artist and you live in the NW, you need to know how to paint rain. Join Carol Couch for a half day experience in learning these techniques. All materials provided for \$40. To register, call Carol at 360-665-5319 or e-mail couchc335@charter.net. You can see Carol's work at trailsendart.org/Couch/couchindex.htm.



Checks made out to
Carol Couch

Week Three

Portrait Painting - Transparent Watercolor Tuesday August 17-Thursday August 19, 9:30-3:30 Daily Fealing Lin

Internationally acclaimed Watercolor Artist, **Fealing Lin**, a signature member of the National Watercolor Society (NWS) will return for a second year to teach her award winning techniques. Her work can be seen at <http://fealingwatercolor.com> and on the cover of SPLASH 11. During this unique three day workshop, participants will complete 2 portraits and a selection of scenes including people. The cost of the workshop is \$285 for TEAA members and \$300 for non members until June 30. After June 30, the cost will be \$325 for all participants. This class is limited to 12 participants. You can register at www.trailsendart.org as well as download the requested materials and preparation requirements. Contact Ellen Zimet at 503-861-0718 or ellenzimet@earthlink.net for more information. **Checks made out to TEAA**



Drawing the Right Way Friday August 20 and Saturday August 21, 9-12 Daily -Sheila Brown



It isn't always necessary to know how to draw in order to be a good artist, but it helps. Studying drawing helps the artist compose pictures, understand values and know how light and shade enhances a painting. **Shelia Brown**, a local artist has an amazing eye for detail and the ability to teach others how to see and sketch more clearly. Class is 2 half days for \$70 and includes all handouts, supplies, and materials. All you bring is you and your interest to learn. Call Shelia at 503-338-6351 to enroll and see Sheila's work at trailsendart.org/SheilaBrown/index.html. **Checks made out to Sheila Brown**

Creating Fused Glass and Jewelry Sunday August 22 and Saturday August 28, 9-1 Daily Albert Wood



If you have ever wondered how all that wonderful glass jewelry is made, it's time to learn to make your own **Fused Glass Jewelry** in this two half-day class with **Albert Wood**. Albert's work can be found at Peninsula Art Association and in homes and adorning women and men throughout Oregon. **On Day one** of the workshop you will make a pendant, brooch or pair of earrings from fusible glass. You will learn to cut glass, assemble each piece and create your own personal pieces of jewelry. Between Day One and Two, Albert will fuse your jewelry pieces and then return them to you for cleaning and finishing on **Day Two**. See his website at trailsendart.org/albertwood/index.html

The cost of \$75 will include all materials. Call Albert at 503-338-9595 to register. **Checks made out to Albert Wood**

Week Four

Uncovering Your Inner Artist & Expanding Your Inner Vision Monday, August 23-Wednesday August 25, 9:30-3:30 Rhonda Grudenic

Rhonda Grudenic is a highly successful NW artist working in a variety of media who will lead participants in an exploration of their hearts, bringing the treasures found there to the surface to enliven their work. Through a variety of techniques chosen for their ability to bypass the inner critique and controller, favorite subjects take on richer meaning. The class will work both with drawing and painting materials. Rhonda has been a featured artist on OPB's televised art series, Oregon Art Beat. Her work has found its way into many private collections around the country and worldwide, including the King of Saudi Arabia and actress, Naomi Watts. Call Rhonda at 503-738-7254 or e-mail at grudenicburke@yahoo.com to register and get a materials list. Three day charge is \$235. Rhonda's paintings can be seen at Riversea Gallery in Astoria and at the Portland Art Museum and on their website. <http://portlandartmuseum.org/visit/rsg/artists/Rhonda-Grudenic/>
Checks made out to TEAA



Acrylic Hand Made Papers & Sustainable Art Thursday August 26 and Friday August 27, 9-3 Linda Rothchild-Ollis



Use acrylics and mixed media to explore how to make hand painted papers with **Linda Rothchild-Ollis**. Participants will learn how to create detailed complex translucent layers with acrylics as they work to achieve dramatic designs. The class will combine professional artist's techniques with hand painted materials to create Sustainable Art using recycled materials. Linda's ongoing work with acrylics and sustainable art can be seen at lrothchildollis.blogspot.com and at <http://www.etsy.com/shop/lrogallery>. The cost for her workshop is \$150 for two days with most materials supplied. A list of items to bring can be found on our website. Register at www.trailsend.org or e-mail ellenzimet@earthlink.net. Checks made out to TEAA

Creating Fused Glass & Jewelry Day Two Saturday August 22, 9-1 Albert Wood

On Day Two you will receive your fused glass pieces for cleaning and finishing. See Day One, August 22 for more information. Checks made out to **Albert Wood**



*I found I could say
things with color and
shapes that I
couldn't say any
other way-things I
had no words for...*

-Georgia O'Keeffe

About Trail's End Art Association

The Trail's End Art Association is celebrating its 60th birthday this year. TEAA is the longest operating arts association in the region and is financed entirely by memberships, classes, commissions on art sold in the gallery and donations. Members participate in managing the gallery and volunteer time monthly when they are showing work.

Each month's calendar is packed with workshops and classes taught not only by the membership, but outstanding regional and national artists.

This uniquely run organization welcomes new members who work at any level. All pieces submitted to the

monthly shows are hung or displayed, even during the annual Judged Competition in August. The overriding belief of membership is to assist everyone to explore art and have an opportunity to show their work as they progress. Visitors and new artists are warmly welcomed!

Trail's End Art Center is located in downtown Gearhart, Oregon. It is close



TRAIL'S END ART ASSOCIATION

Located at:
656 A St. Gearhart, OR
Mailing Address:
PO Box 2351
Gearhart, Oregon 97138
Phone: 503-717-9458
Website: trailsendart.org

enough to the beach to hear the ocean and there are amenities such as restaurants, a small grocery store, and a golf course close by. If you are visiting from a distance, check with the Seaside Chamber of Commerce for lodging www.seasidechamber.com.

To register, just follow the directions on each workshop or send in the form below or at www.trailsendart.org/regform.htm

A TASTE OF ART IN GEARHART
Registration Form

Your Name _____ e-mail _____

Address _____ City _____

State _____ Zip _____ Phone(s) _____

Workshop(s) _____

Date _____ Amount Enclosed \$ _____

All checks for ALL workshops are to be made out to TEAA

Put the name of the workshop(s) you are choosing on your check and
Mail to TEAA PO Box 2351 Gearhart, OR 97138'-Attn: Ellen Zimet'
Call 503-717-9458